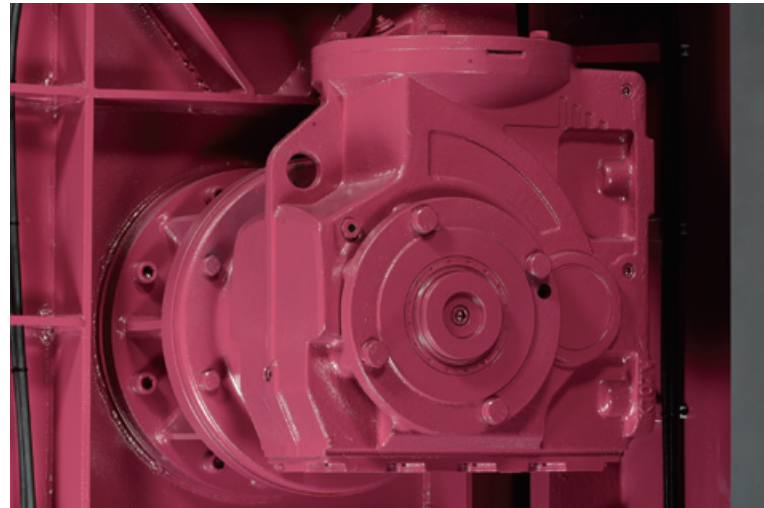


# SINGULAR DESIGN OF SAWING MACHINE

Excellence in Machinery Design and Mechanical Craftsmanship



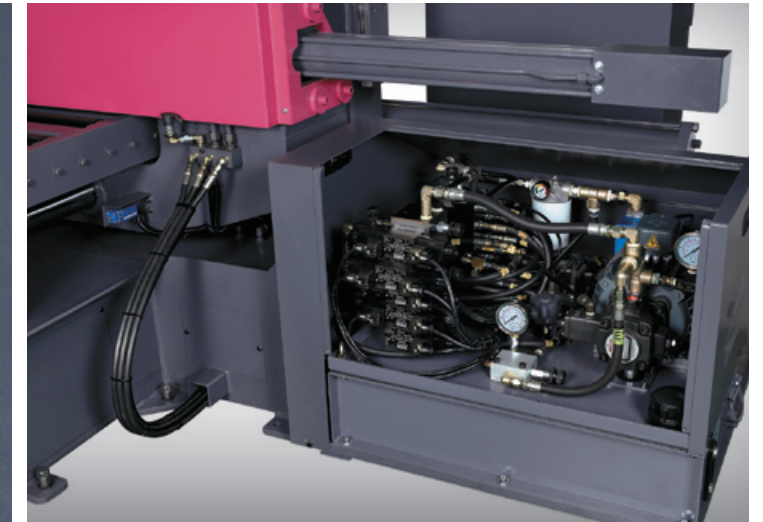
## Helical-bevel gear reducer

Allows the higher transmission efficiency, higher stability and less noise.



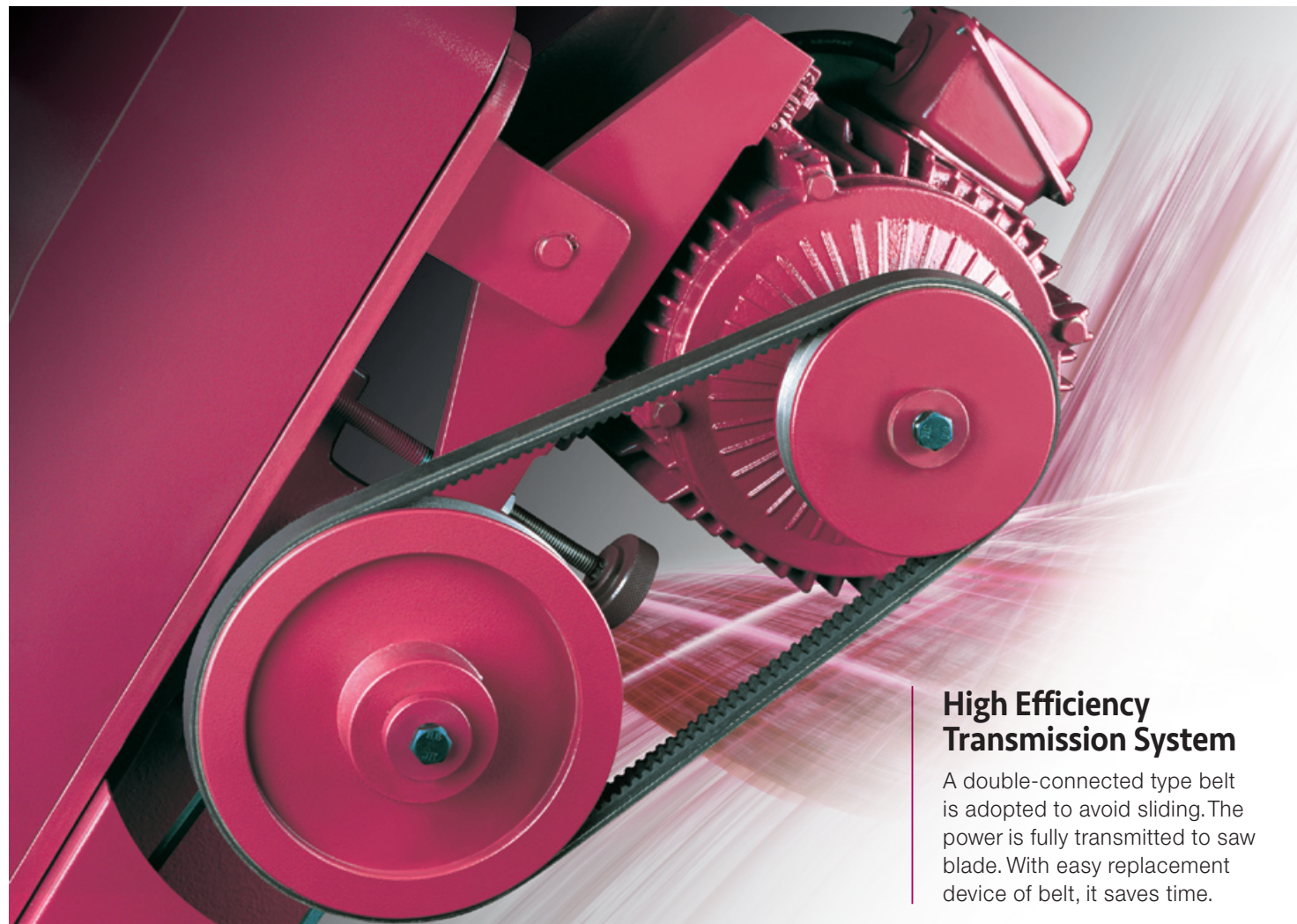
## Cutting depth control

Precisely control cutting depth by presetting.



## Modularized hydraulic system

Allows efficient hydraulic control and easy maintenance.



## High Efficiency Transmission System

A double-connected type belt is adopted to avoid sliding. The power is fully transmitted to saw blade. With easy replacement device of belt, it saves time.



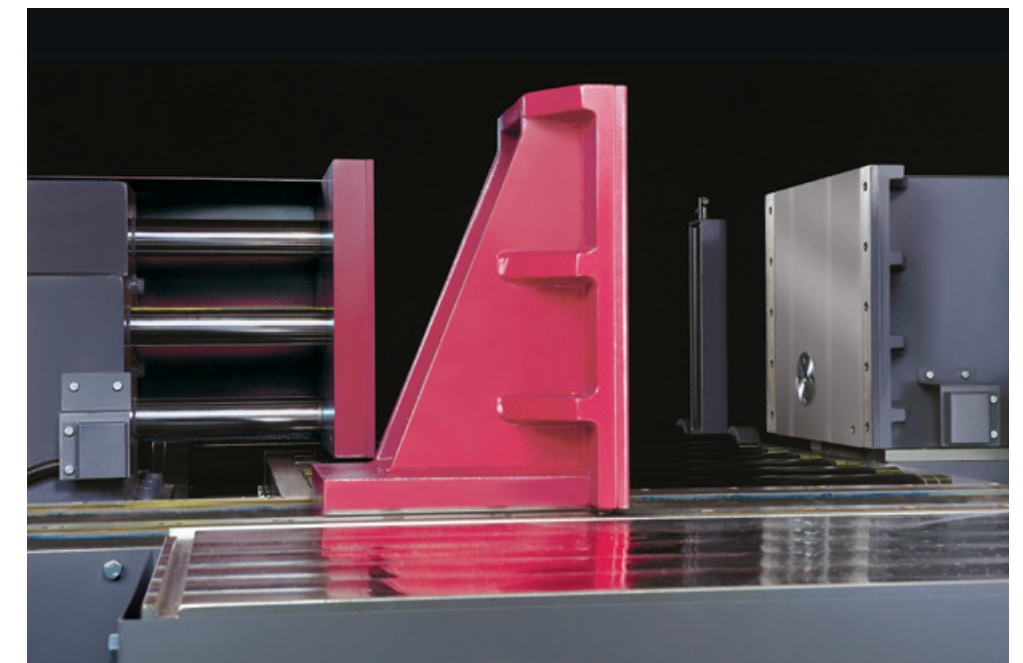
## Control Panel

Control panel and touch screen collocated with human machine interface allow easy operation and high efficiency.

The information of problems and trouble shooting are showed in screen when machine operates abnormally and historical date also recorded for reference.

## Out of Stock Monitor

The machine stops automatically when work-piece's length is shorter than the cutting length to avoid the falling of remained piece and the damage of the index guiding shaft.





# SINGULAR DESIGN OF SAWING MACHINE

Excellence in Machinery Design and Mechanical Craftsmanship



## Hydraulic Chip Conveyor

The reverse pushing design conveys chips efficiently. It can make chips drier when conveying and save more space.

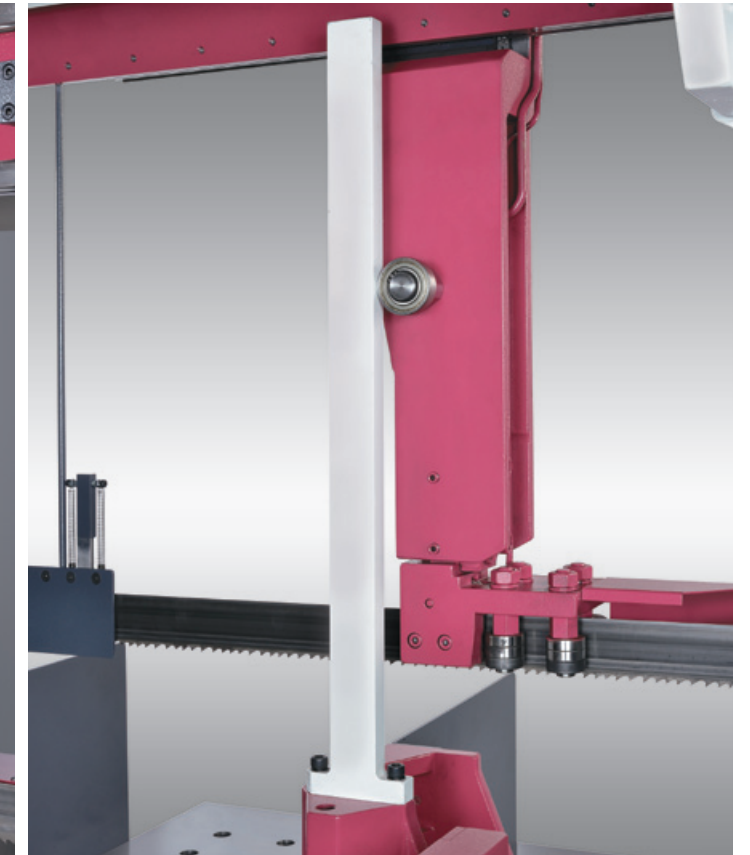


## Band Deviation Monitor

The machine stops automatically when the deviation of the saw blade is over the preset figure. It allows a square cutting and avoids wasting the cutting material.

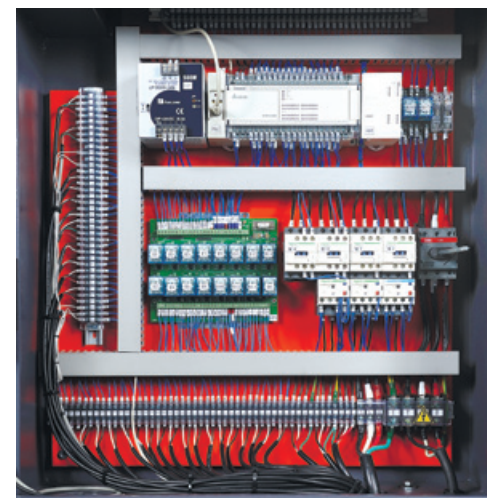
## Saw arm and vise coordinately move using linear guideway

Saw arm synchronously moved by band and vise allows easy operating, prevents colliding.



## Hydraulic Blade Tension

The blade tension is preset according to practical demand and maintained. The blade is loosened when the machine stops. It allows high cutting efficiency and long blade life.



## Electrical Circuit Board

An efficient PLC and high quality components are adopted for electrical control system. The applicable space collocation allows easy and convenient maintenance and save time.

## Magnetic Scale

The contact-free positioning system allows the high precision of length setting and prevents the problems of dirt build-up that besets other positioning systems.

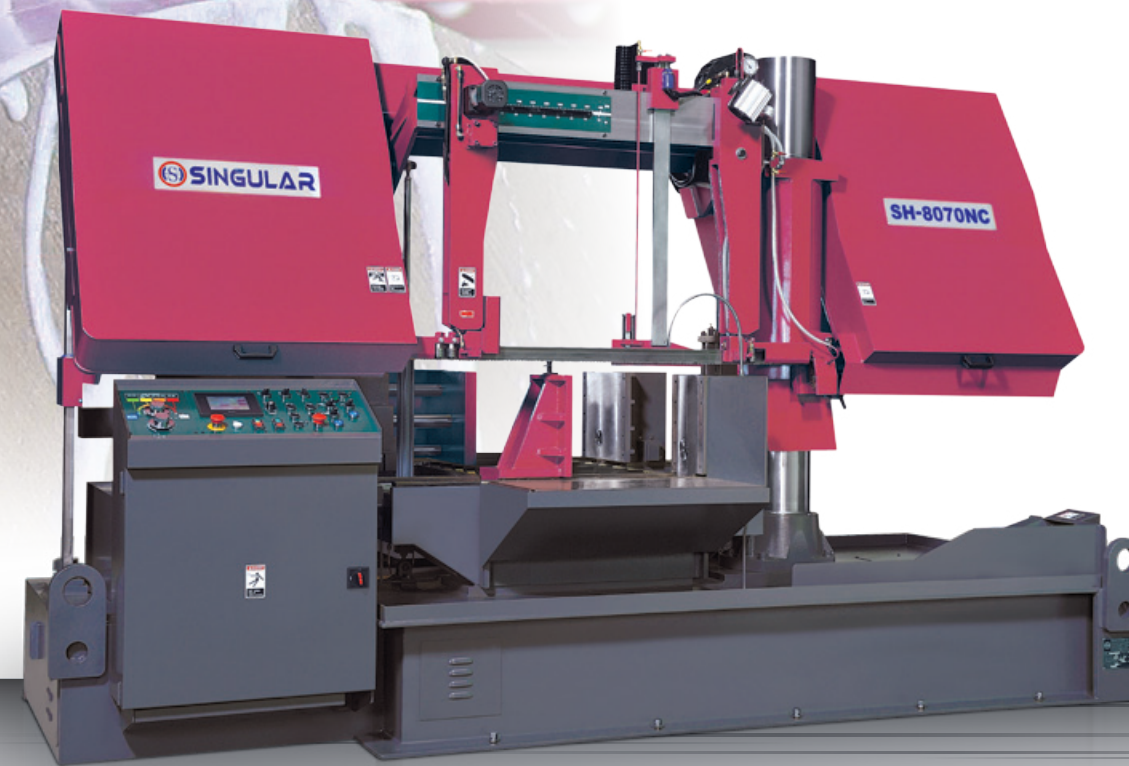




# NC Band Saw



SH-4242NC



SH-8070NC



SH-6056NC



SH-5650NC





# NC Band Saw Specifications

| Model                              | Unit           | SH-3028NC            | SH-4033NC            | SH-4242NC            | SH-5046NC            | SH-5650NC            | SH-6056NC            | SH-6260NC            | SH-8056NC            | SH-8070NC            | SH-1080NC            |
|------------------------------------|----------------|----------------------|----------------------|----------------------|----------------------|----------------------|----------------------|----------------------|----------------------|----------------------|----------------------|
| Cutting Capacity                   | ●              | 10 ~ 280             | 10 ~ 330             | 10 ~ 420             | 10 ~ 460             | 10 ~ 500             | 10 ~ 560             | 10 ~ 600             | 10 ~ 560             | 100 ~ 700            | 200 ~ 800            |
|                                    | ■              | W10xH10~W300xH280    | W10xH10~W400xH330    | W10xH10~W420xH420    | W10xH10~W510xH460    | W10xH10~W560xH500    | W10xH10~W610xH560    | W10xH10~W620xH600    | W10xH10~W800xH560    | W100xH100~W800xH700  | W200xH25~W1,000xH800 |
| Bundle Cutting                     | Max.           | W250 x H100          | W370 x H170          | W370 x H200          | W480 x H240          | W480 x H260          | NA                   | W480 x H440          | NA                   | NA                   | NA                   |
|                                    | Min.           | W165 x H15           | W165 x H50           | W165 x H80           | W240 x H80           | W240 x H80           |                      | W260 x H360          |                      |                      |                      |
| Saw Blade                          | Size           | 3,820 x 34 x 1.1     | 4,242 x 34 x 1.1     | 4,880 x 41 x 1.3     | 5,300 x 41 x 1.3     | 5,450 x 41 x 1.3     | 6,600 x 54 x 1.6     | 6,560 x 41 x 1.3     | 7,000 x 54 x 1.6     | 8,000 x 54 x 1.6     | 8,800 x 67 x 1.6     |
|                                    | Speed          | m/min                | 16 ~ 85              |                      |                      |                      |                      | 16 ~ 85              |                      |                      |                      |
| Motors Output                      | Tension        | Hydraulic            |                      |                      |                      |                      | Hydraulic            |                      |                      |                      |                      |
|                                    | Saw Blade      | 3.7 KW (5 HP)        | 3.7 KW (5 HP)        | 5.5 KW (7.5 HP)      | 5.5 KW (7.5 HP)      | 5.5KW (7.5HP)        | 7.5 KW (10 HP)       | 5.5 KW (7.5 HP)      | 7.5 KW (10 HP)       | 11.2 KW (15 HP)      | 11.2 KW (15 HP)      |
| Tanks                              | Hydraulic Pump | 0.75 KW (1 HP)       | 0.75 KW (1 HP)       | 1.5 KW (2 HP)        | 1.5 KW (2 HP)        | 1.5KW (2HP)          | 2.2 KW (3 HP)        | 1.5 KW (2 HP)        | 2.2 KW (3 HP)        | 2.2 KW (3 HP)        | 2.2 KW (3 HP)        |
|                                    | Coolant Pump   | 0.2 KW (1/4 HP)      |                      |                      |                      |                      | 0.2 KW (1/4 HP)      |                      |                      |                      |                      |
| Feeding Length (Single / Multiple) | Hydraulic      | 60                   | 60                   | 85                   | 85                   | 85                   | 130                  | 95                   | 130                  | 135                  | 130                  |
|                                    | Coolant        | 80                   | 90                   | 100                  | 110                  | 110                  | 140                  | 150                  | 140                  | 230                  | 240                  |
| Working Height                     | mm             | 400 / 3,600          | 500 / 4,500          | 500 / 4,500          | 500 / 4,500          | 500 / 4,500          | 400 / 3,600          | 400 / 3,600          | 400 / 3,600          | 400 / 3,600          | 400 / 3,600          |
| Dimensions                         | mm             | 700                  | 700                  | 700                  | 750                  | 750                  | 850                  | 800                  | 850                  | 800                  | 830                  |
| Net Weight                         | mm             | W2,100xL1,990xH1,300 | W2,250xL2,195xH1,400 | W2,450xL2,235xH1,665 | W2,580xL2,240xH1,800 | W2,630xL2,260xH1,820 | W3,210xL2,135xH2,160 | W3,210xL2,130xH2,030 | W3,410xL2,135xH2,160 | W3,910xL2,240xH2,300 | W4,350xL2,390xH2,750 |
| Net Weight                         | kg             | 1,750                | 2,000                | 2,500                | 2,850                | 3,000                | 4,500                | 3,800                | 4,850                | 7,100                | 11,500               |

★ For technical demand, product specifications and equipments / accessories are subject to change without notice.

## Standard Equipment & Accessories

- PLC control for all electric and hydraulic functions.
- Infinitely variable blade speed controlled by inverter.
- Idle wheel motion detector with blade stalling and breakage shutoff.
- Shuttle type automatic feed and sliding work table with roller.
- Hydraulic blade tension.
- Automatic blade height control and rapid approach.
- Carbide blade guide with roller bearing.
- Nesting fixture for bundle cutting.

- Length setting: Magnetic scale.
- 20 workstations presetting.
- Automatic chip conveyor.
- Power driven blade-cleaning wire brush.
- Flushing hose for machine cleaning.
- Work lamp.
- One set of tools in tool box.
- One set of 2-meter roller stand.

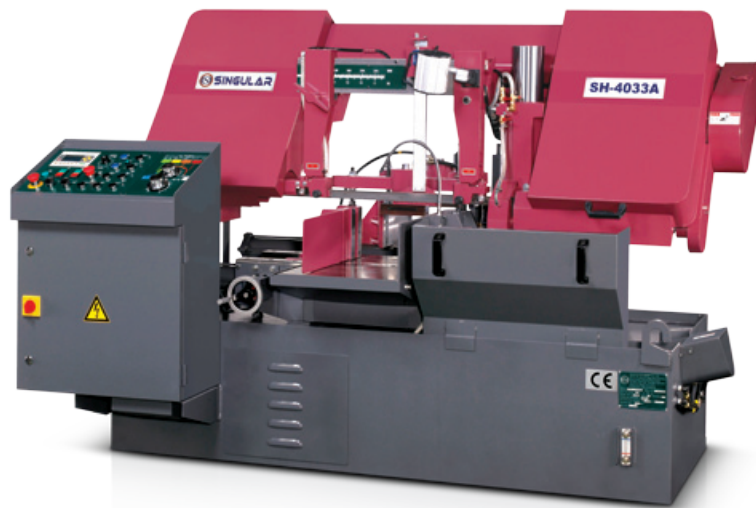
## Optional Equipment

- Variable vise pressure.
- Blade deviation monitor.
- Out of stock monitor.

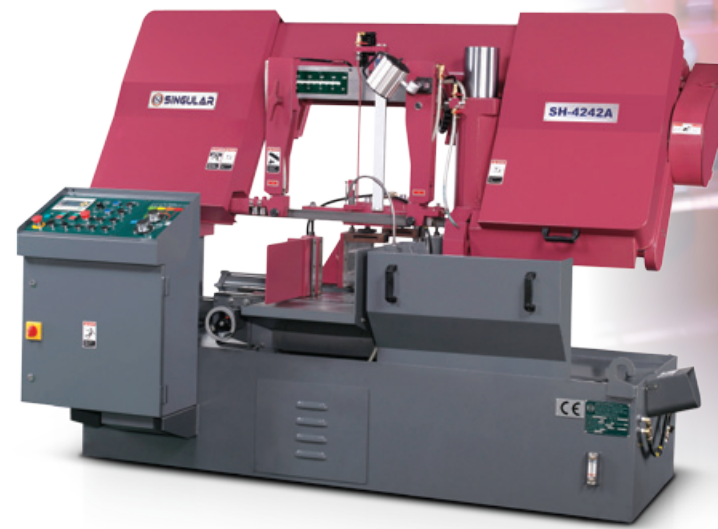


# SH-1080NC

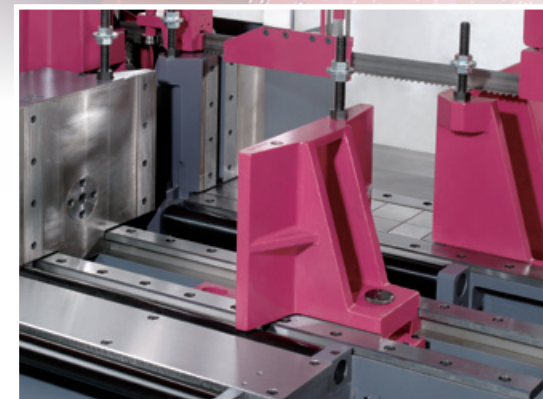
# Fully Automatic Band Saw



**SH-4033A**



**SH-4242A**



## Standard Equipment & Accessories

- PLC control for all electric and hydraulic functions.
- Infinitely variable blade speed controlled by inverter.
- Idle wheel motion detector with blade stalling and breakage shutoff.
- Shuttle type automatic feed and sliding work table with roller.
- Hydraulic blade tension.
- Automatic blade height control and rapid approach.

- Carbide blade guide with roller bearing.
- Nesting fixture for bundle cutting. (NA for SH-6056A, SH-8056A, SH-8070A, SH-1080A)
- Length setting: Screw & nut with digital indicator.
- Automatic chip conveyor.
- Power driven blade-cleaning wire brush.
- Flushing hose for machine cleaning.
- Work lamp.
- One set of tools in tool box.
- One set of 2-meter roller stand.

## Optional Equipment

- Variable vise pressure.
- Blade deviation monitor.
- Out of stock monitor.

## Specifications

| Model                              | Unit           | SH-3028A             | SH-4033A             | SH-4242A             | SH-5046A             | SH-5650A             | SH-6056A             | SH-6260A             | SH-8056A             | SH-8070A             | SH-1080A             |                      |
|------------------------------------|----------------|----------------------|----------------------|----------------------|----------------------|----------------------|----------------------|----------------------|----------------------|----------------------|----------------------|----------------------|
| Cutting Capacity                   | ●              | mm                   | 10 ~ 280             | 10 ~ 330             | 10 ~ 420             | 10 ~ 460             | 10 ~ 500             | 10 ~ 560             | 10 ~ 600             | 10 ~ 560             | 100 ~ 700            | 200 ~ 800            |
|                                    | ■              | mm                   | W10xH10~W300xH280    | W10xH10~W400xH330    | W10xH10~W420xH420    | W10xH10~W510xH460    | W10xH10~W560xH500    | W10xH10~W610xH560    | W10xH10~W620xH600    | W10xH10~W800xH560    | W100xH100~W800xH700  | W200xH25~W1,000xH800 |
| Bundle Cutting                     | Max.           | mm                   | W250 x H100          | W370 x H170          | W370 x H200          | W480 x H240          | W480 x H260          | NA                   | W480 x H440          | NA                   | NA                   | NA                   |
|                                    | Min.           | mm                   | W165 x H15           | W165 x H50           | W165 x H80           | W240 x H80           | W240 x H80           |                      | W260 x H360          |                      |                      |                      |
| Saw Blade                          | Size           | mm                   | 3,820 x 34 x 1.1     | 4,242 x 34 x 1.1     | 4,880 x 41 x 1.3     | 5,300 x 41 x 1.3     | 5,450 x 41 x 1.3     | 6,600 x 54 x 1.6     | 6,560 x 41 x 1.3     | 7,000 x 54 x 1.6     | 8,000 x 54 x 1.6     | 8,800 x 67 x 1.6     |
|                                    | Speed          | m/min                | 16 ~ 85              |                      |                      |                      | 16 ~ 85              |                      |                      |                      |                      |                      |
|                                    | Tension        |                      | Hydraulic            |                      |                      |                      | Hydraulic            |                      |                      |                      |                      |                      |
| Motors Output                      | Saw Blade      |                      | 3.7 KW (5 HP)        | 3.7KW (5 HP)         | 5.5 KW (7.5 HP)      | 5.5 KW (7.5 HP)      | 5.5 KW (7.5 HP)      | 7.5 KW (10 HP)       | 5.5 KW (7.5 HP)      | 7.5 KW (10 HP)       | 11.2 KW (15 HP)      | 11.2 KW (15 HP)      |
|                                    | Hydraulic Pump |                      | 0.75 KW (1 HP)       | 0.75 KW (1 HP)       | 1.5 KW (2 HP)        | 1.5 KW (2 HP)        | 1.5 KW (2 HP)        | 2.2 KW (3 HP)        | 1.5 KW (2 HP)        | 2.2 KW (3 HP)        | 2.2 KW (3 HP)        | 2.2 KW (3 HP)        |
|                                    | Coolant Pump   |                      | 0.2 KW (1/4 HP)      |                      |                      |                      | 0.2 KW (1/4 HP)      |                      |                      |                      |                      |                      |
| Tanks                              | Hydraulic      | L                    | 60                   | 60                   | 85                   | 85                   | 85                   | 130                  | 95                   | 130                  | 135                  | 130                  |
|                                    | Coolant        | L                    | 80                   | 90                   | 100                  | 110                  | 110                  | 140                  | 150                  | 140                  | 230                  | 240                  |
| Feeding Length (Single / Multiple) | mm             | 400 / 3,600          | 500 / 4,500          | 500 / 4,500          | 500 / 4,500          | 500 / 4,500          | 400 / 3,600          | 400 / 3,600          | 400 / 3,600          | 400 / 3,600          | 400 / 3,600          | 400 / 3,600          |
| Working Height                     | mm             | 700                  | 700                  | 700                  | 750                  | 750                  | 850                  | 800                  | 850                  | 800                  | 800                  | 830                  |
| Dimensions                         | mm             | W2,100xL1,990xH1,300 | W2,250xL2,195xH1,400 | W2,450xL2,235xH1,665 | W2,580xL2,240xH1,800 | W2,630xL2,260xH1,820 | W3,210xL2,135xH2,160 | W3,210xL2,130xH2,030 | W3,410xL2,135xH2,160 | W3,910xL2,240xH2,300 | W4,350xL2,390xH2,750 |                      |
| Net Weight                         | kg             | 1,750                | 2,000                | 2,500                | 2,850                | 3,000                | 4,500                | 3,800                | 4,850                | 7,100                | 11,500               |                      |

★ For technical demand, product specifications and equipments / accessories are subject to change without notice.



# Semiautomatic Band Saw



**SH-1100SA**

**SH-1713SA**



**SH-8056SA**

## Standard Equipment & Accessories

- PLC control for all electric and hydraulic functions.
- Idle wheel motion detector with blade stalling and breakage shutoff.
- Hydraulic blade tension.
- Carbide blade guide with roller bearing.
- Length setting: Manual setting.
- Power driven blade-cleaning wire brush.
- Flushing hose for machine cleaning.
- Work lamp.
- One set of tools in tool box.
- One set of 2-meter roller stand.

## Optional Equipment

- Nesting fixture for bundle cutting.
- Automatic chip conveyor.
- Variable vise pressure.
- Blade deviation monitor.
- Infinitely variable blade speed controlled by inverter.

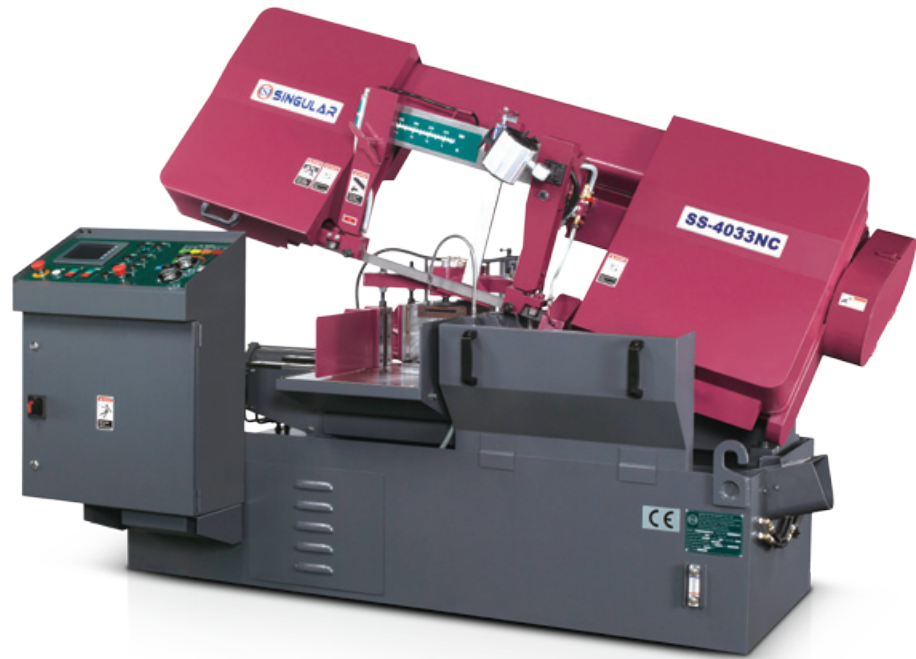
## Specifications

| Model            | Unit           | SH-3028SA                | SH-4033SA                | SH-5650SA                | SH-8056SA                | SH-1080SA                  | SH-1100SA            | SH-1713SA            |
|------------------|----------------|--------------------------|--------------------------|--------------------------|--------------------------|----------------------------|----------------------|----------------------|
| Cutting Capacity | ●              | 10 ~ 280                 | 10 ~ 330                 | 10 ~ 550                 | 10 ~ 560                 | 560 ~ 800                  | 550 ~ 1100           | 695 ~ 1300           |
|                  | ■              | W10 x H10 ~ W300 x H280  | W10 x H10 ~ W400 x H330  | W10 x H10 ~ W560 x H500  | W10 x H10 ~ W800 x H560  | W560 x H25 ~ W1,000 x H800 | W550xH25~W1100xH1100 | W695xH25~W1700xH1300 |
| Bundle Cutting   | Max.           | W250 x H100              | W370 x H170              | W480 x H240              | W480 x H280              | NA                         |                      |                      |
|                  | Min.           | W165 x H15               | W165 x H50               | W240 x H80               | W260 x H160              | NA                         |                      |                      |
| Saw Blade        | Size           | 3,820 x 34 x 1.1         | 4,242 x 34 x 1.1         | 5,450 x 41 x 1.3         | 6,800 x 54 x 1.6         | 8,800 x 67 x 1.6           | 10,000 x 67 x 1.6    | 13,000 x 80 x 1.6    |
|                  | Speed          | 20, 35, 50, 65, 80       | 20, 35, 50, 65, 80       | 20, 35, 50, 65, 80       | 16 ~ 85 (INV)            | 16 ~ 85                    | 15 ~ 80 (INV)        | 12 ~ 75 (INV)        |
|                  | Tension        | Hydraulic                |                          |                          |                          | Hydraulic                  |                      |                      |
| Motors Output    | Saw Blade      | 3.7 KW (5 HP)            | 3.7 KW (5 HP)            | 5.5 KW (7.5 HP)          | 7.5 KW (10 HP)           | 11.2 KW (15 HP)            | 11.2 KW (15 HP)      | 15KW (20HP)          |
|                  | Hydraulic Pump | 0.75 KW (1 HP)           | 0.75 KW (1 HP)           | 1.5 KW (2 HP)            | 2.2 KW (3 HP)            | 2.2 KW (3 HP)              | 2.2 KW (3 HP)        | 3.7KW (5HP)          |
|                  | Coolant Pump   | 0.2 KW (1/4 HP)          |                          |                          |                          | 0.2 KW (1/4 HP)            |                      |                      |
| Tanks            | Hydraulic      | 60                       | 60                       | 85                       | 120                      | 85                         | 90                   | 165                  |
|                  | Coolant        | 75                       | 80                       | 110                      | 140                      | 220                        | 200                  | 280                  |
| Working Height   | mm             | 700                      | 700                      | 750                      | 850                      | 720                        | 680                  | 680                  |
| Dimensions       | mm             | W2,110 x L1,210 x H1,520 | W2,240 x L1,210 x H1,550 | W2,890 x L1,550 x H1,800 | W3,300 x L1,950 x H2,000 | W4,350 x L2,160 x H2,650   | W4,600xL2,400xH3,250 | W6,200xL2,800xH3,800 |
| Net Weight       | kg             | 1,200                    | 1,650                    | 2,600                    | 3,800                    | 11,000                     | 14,000               | 21,000               |

★ For technical demand, product specifications and equipments / accessories are subject to change without notice.



# Pivot Type Band Saw



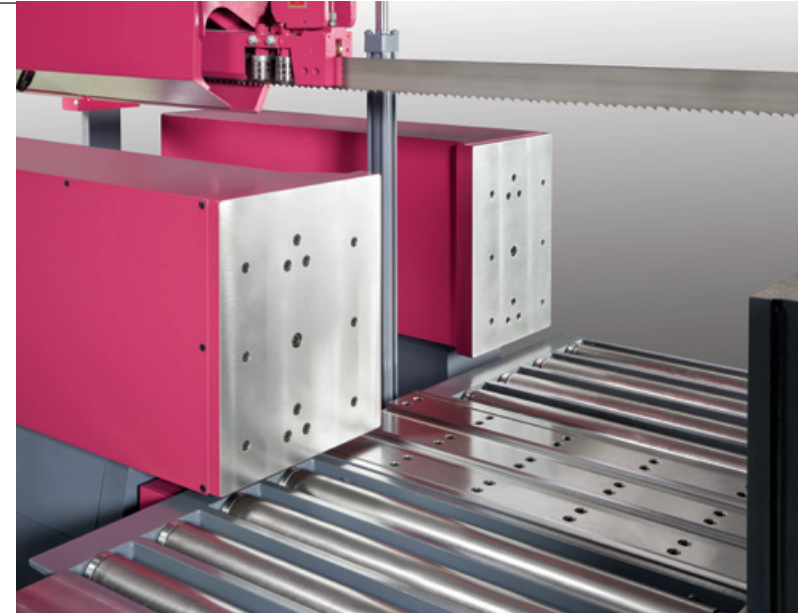
## SS-3028NC | SS-4033NC

### Standard Equipment & Accessories

- PLC control for all electric and hydraulic functions.
- Infinitely variable blade speed controlled by inverter.
- Idle wheel motion detector with blade stalling and breakage shutoff.
- Shuttle type automatic feed and sliding work table with roller.
- Hydraulic blade tension.
- Automatic blade height control and rapid approach.
- Carbide blade guide with roller bearing.
- Nesting fixture for bundle cutting.
- Length setting: Magnetic scale.
- 20 workstations presetting.
- Automatic chip conveyor.
- Power driven blade-cleaning wire brush.
- Flushing hose for machine cleaning.
- Work lamp.
- One set of tools in tool box.
- One set of 2-meter roller stand.

### Optional Equipment

- Variable vise pressure.
- Blade deviation monitor.
- Out of stock monitor.



## SH-1080SA Semiautomatic Band Saw



## Specifications

| Model                              | Unit           | SS-3028NC<br>SS-3028A | SS-4033NC<br>SS-4033A |
|------------------------------------|----------------|-----------------------|-----------------------|
| Cutting Capacity                   | ●              | 10 ~ 280              | 10 ~ 330              |
|                                    | ■              | mm                    | mm                    |
| Bundle Cutting                     | Max.           | W10xH10 ~ W300xH280   | W10xH10 ~ W400xH330   |
|                                    | Min.           | mm                    | mm                    |
| Saw Blade                          | Size           | mm                    | mm                    |
|                                    | Speed          | m/min                 | 16 ~ 85               |
| Motors Output                      | Tension        |                       | Hydraulic             |
|                                    | Saw Blade      |                       | 3.7 KW (5 HP)         |
|                                    | Hydraulic Pump |                       | 0.75 KW (1 HP)        |
| Tanks                              | Coolant Pump   |                       | 0.2 KW (1/4 HP)       |
|                                    | Hydraulic      | L                     | 60                    |
| Feeding Length (Single / Multiple) | Coolant        | L                     | 80 / 90               |
|                                    | mm             |                       | 400 / 3,600           |
| Working Height                     | mm             |                       | 700                   |
| Dimensions                         | mm             | W2,130xL1,990xH1,260  | W2,300xL2,060xH1,330  |
| Net Weight                         | kg             | 1,720                 | 1,920                 |

★For technical demand, product specifications and equipments / accessories are subject to change without notice.

## SS-3028A | SS-4033A

### Standard Equipment & Accessories

- PLC control for all electric and hydraulic functions.
- Infinitely variable blade speed controlled by inverter.
- Idle wheel motion detector with blade stalling and breakage shutoff.
- Shuttle type automatic feed and sliding work table with roller.
- Hydraulic blade tension.
- Automatic blade height control and rapid approach.
- Carbide blade guide with roller bearing.
- Nesting fixture for bundle cutting.
- Length setting: Screw & nut with digital indicator.
- Automatic chip conveyor.
- Power driven blade-cleaning wire brush.
- Flushing hose for machine cleaning.
- Work lamp.
- One set of tools in tool box.
- One set of 2-meter roller stand.

### Optional Equipment

- Variable vise pressure.
- Blade deviation monitor.
- Out of stock monitor.

## A Specialized Manufacturer of Sawing Machine

High Quality | High Rigidity | High Efficiency

## SC-150A Circular Saw

