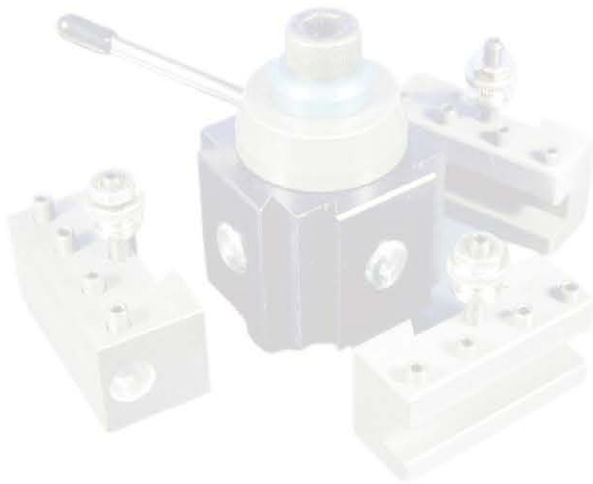




**GR**  **UP**  
QUALITY YOU CAN TRUST



# Torno Conventional Lathe ML Machine

New range of manual lathes with variable speed head. The new range of ML lathes, equipped with an electronic speed variator, allows the necessary cutting speed to be selected at all times, achieving better surface finishes, optimising tool consumption and improving machining performance.

The new ML models stand out for their precision and useful life, being versatile machines for both maintenance and production work.

MODELS ML 200 > ML 250 > ML 325



## STANDARD EQUIPMENT

- Headstock with variable speed 3 ranges
- Reducing bush of main shaft and fixed point
- Dead center for tailstock
- 4-position toolpost
- Stop brake
- Micro switch chuck protection
- Emergency stop button
- Refrigeration equipment
- Rear and chuck anti-projection guard
- Sliding front guard
- Rigid protection of the standard spindle
- Cast iron pedestals
- Working light
- Instruction manual
- Verification standard DIN 8605
- CE Standard

## OPTIONAL EXTRAS

- Chucks with 3 and 4 jaws
- Chucks with 3 and 4 jaws
- Rear chuck
- Fixed Steady Rest
- Large capacity fixed steady rest
- Follow Rest
- Quick-change toolpost
- Multifix quick-change toolpost
- Digital Read Out
- Live center
- Cone Copier
- Anti-vibration kit
- Stopper
- Micrometer carriage stop
- Electric transformer
- Rapid movements

		ML-200		ML-250		ML-325			
<b>Working capacity</b>									
Center distance	mm / in	750/30	1000/40	1000/40	1500/60	1000/40	1500/60	2000/80	3000/120
Bed width	mm / in	250 / 10		300 / 12		350 / 14			
Centre height	mm / in	200 / 8		250 / 10		325 / 13			
Ø max. swing over bed	mm / in	400 / 16		500 / 20		650 / 26			
Ø max swing over gap	mm / in	525 / 20		700 / 27 1/2		785 / 30			
Gap length from face plate	mm / in	120 / 5		160 / 6		220 / 9			
Ø max. swing over carriage	mm / in	370 / 15		450 / 18 3/4		595 / 23			
Ø max. swing over cross slide	mm / in	245 / 9 1/2		310 / 12		450 / 22			
Cross slide travel	mm / in	230 / 9		240 / 9 3/4		335 / 13			
Tool post slide travel (saddle)	mm / in	95 / 3 1/4		125 / 5		150 / 5 1/2			
Longitudinal carriage travel	mm / in	605/23	870/34	1000/39	1440/56	1035/40	1435/56	1960/77	2860/112
Dimensions of tool handle	mm	20x20		25x25		25x25			

### Headstock

Main motor power	kW	4		5.5		7.5			
Headstock main spindle bore	mm / in	42 / 1 1/2		58/2 1/4	105/4	80 / 3	105 / 4		155 / 6
Main spindle nose Valid for all distances between centres	ASA / CAM-LOCK	A2-5 / D1-5		A2-6 / D1-6	A2-8 / D1-8	A2-8 / D1-8			A2-11
Main spindle nose taper	MT	4		4		5	4		5
Speed ranges	Range I	r.p.m.	40 - 280	40 - 275	85 - 200	30 - 200	80 - 200		50 - 120
	Range II	r.p.m.	280 - 815	275 - 760	200 - 465	200 - 550	200 - 465		120 - 290
	Range III	r.p.m.	815 - 2300	760 - 2080	465 - 1250	550 - 1500	465 - 1250		290 - 800

### X-axis, Z-axis

Threads and feeds		44			55	44	55
Longitudinal feeds	mm / rev	0.05 - 0.752			0.05 - 1.5	0.05 - 0.752	0.05 - 1.5
Cross feeds	mm / rev	0.025 - 0.376			0.025 - 0.752	0.025 - 0.376	0.025 - 0.752
Metric threads	mm	0.5 - 7.5			0.5 - 15	0.5 - 7.5	0.5 - 15
Whitworth threads		60 - 4			60 - 2	60 - 4	60 - 2
Modular threads	mm	0.25 - 3.75			0.25 - 7.5	0.25 - 3.75	0.25 - 7.5
Pitch diametral threads		120 - 8			120 - 4	120 - 8	120 - 4
Lead screw rod pitch Ø35	mm / in	6 / 1 1/4			6 / 1 1/4	6 / 1 1/4	6 / 1 1/4

### Tailstock

Tailstock barrel Ø	mm / in	58 / 2 1/4		68 / 2 1/2		95 / 3 3/4			
Tailstock barrel travel	mm / in	180 / 7		200 / 7 3/4		220 / 8 1/2			
Tailstock Morse taper	MT	4		4		5			

### Dimensions and Weight

Length	mm	2120	2360	2620	3040	2540	3020	3650	4580
Width	mm	950		1000		1140			
Height	mm	1580		1650		1770			
Weight	kg	1250	1320	1845	2035	2160	2400	2650	3170

### Options

Fixed steady rest Ø	mm	10 - 125		10 - 140		10 - 180			
Large capacity fixed steady rest Ø	mm	110 - 200		140 - 300		180 - 400			
Follow rest Ø	mm	10 - 80		10 - 90		10 - 140			

### Dimensions and weight with packaging

Length	mm	2320	2560	2820	3240	2740	3220	3850	4780
Width	mm	1050		1100		1240			
Height	mm	1780		1850		1970			
Weight	kg	1550	1620	2145	2335	2560	2800	3050	3570



## Contact Us

FOR FURTHER  
INFORMATION PLEASE  
CONTACT OUR SALES  
TEAM

Tel: +61 492 976 806 Email:  
[info@tj-group.com.au](mailto:info@tj-group.com.au)

[www.tj-group.com.au](http://www.tj-group.com.au)



Suite A33, Level 4, 24-32  
Lexington Drive  
Bella Vista  
NSW 2153  
Australia