



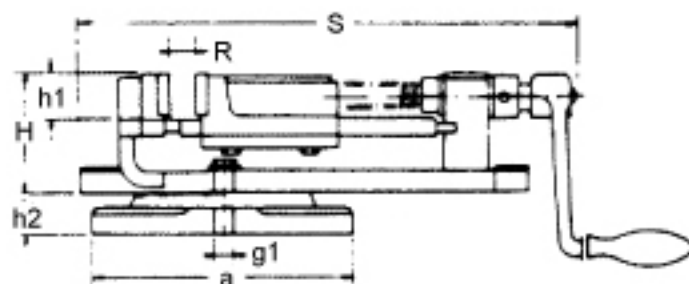
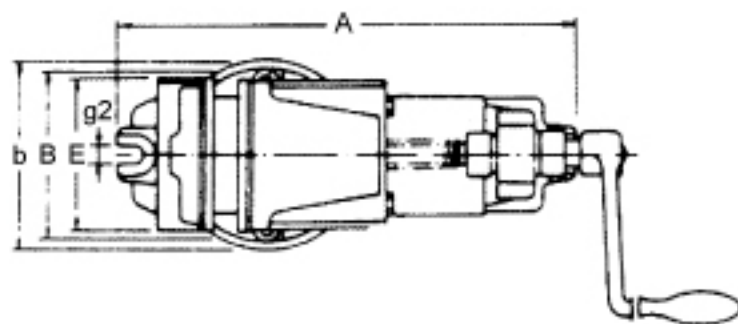
TAIWAN TOOL

Milling Machine Accessories / Vise

K-Type Milling Vise (With base plate) <<< KV-4/6/8 >>>

Features:

- 1-Body, movable jaw and swivel base made of close-grained high tensile iron casting. Built for heavy duty machining and retained accuracy.
- 2-Jaw plates of hardened and ground tool steel
- 3-It's the most suitable for the Milling, Grinding and Drilling



Specifications:

Unit:mm

Model	E	A	B	H	R	S	a	b	h1	h2	g1	g2	G.W (kg)
KV-4	100	267	106	75	62	295	160	114	30	25	13	13	10
KV-6	150	421	160	105	114	462	245	175	40	40	16	16	27
KV-8	200	576	215	144	150	620	340	230	58	45	18	18	57

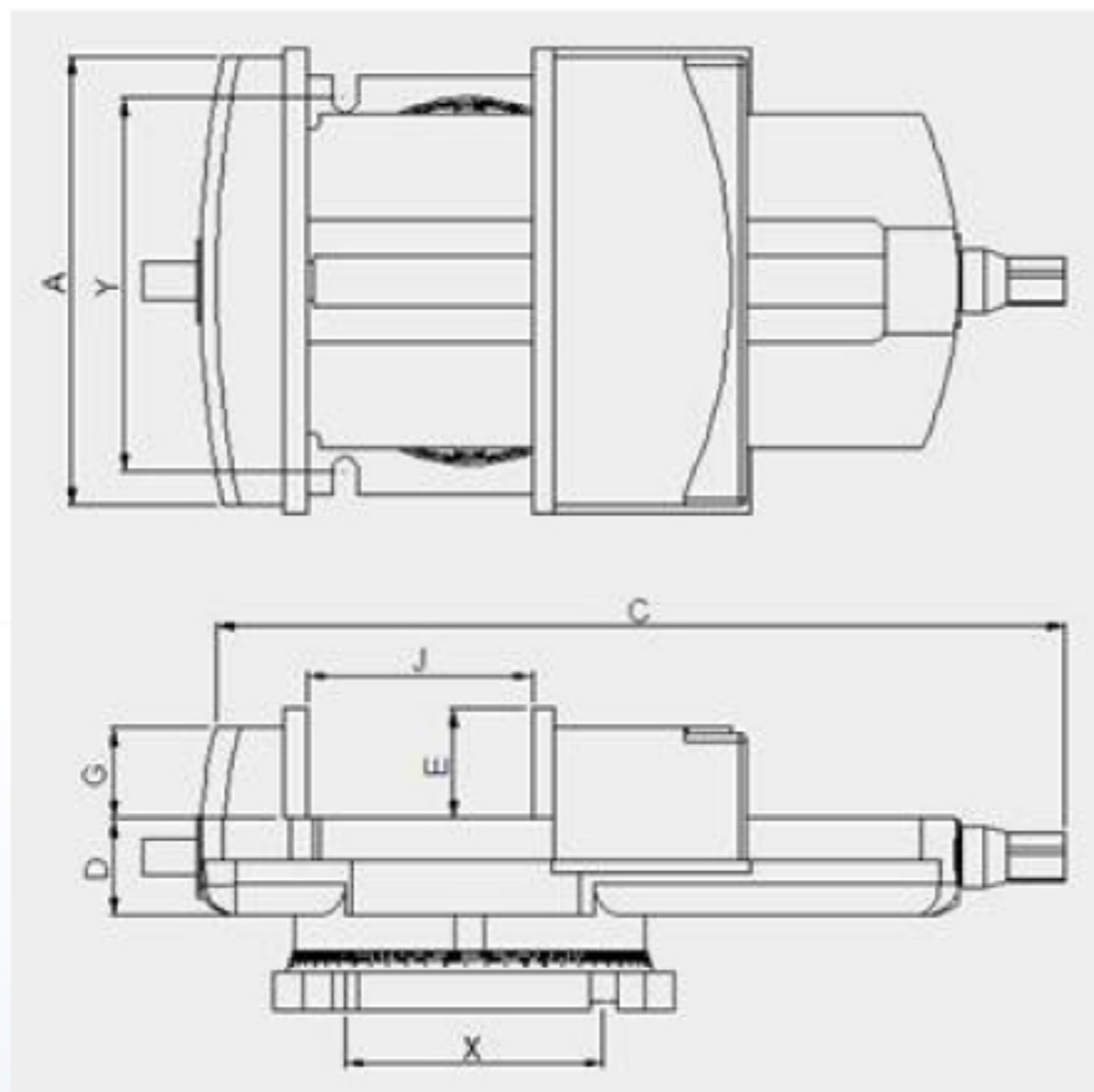
*Above information are for reference only. The machine design, specifications and construction are subject to change without prior notice.



TAIWAN TOOL

Milling Machine Accessories / Vise

Shaper/Milling Vise <<< S-12"~S-20" >>>



Unit:mm

MODEL	A	C	D	E	G	X	Y	J	N.W.(kg)
S-12"	294	580	87	72	60	168	240	300	76
S-16"	396	700	98	85	82	250	290	400	117
S-20"	500	820	106	96	86	250	290	500	160

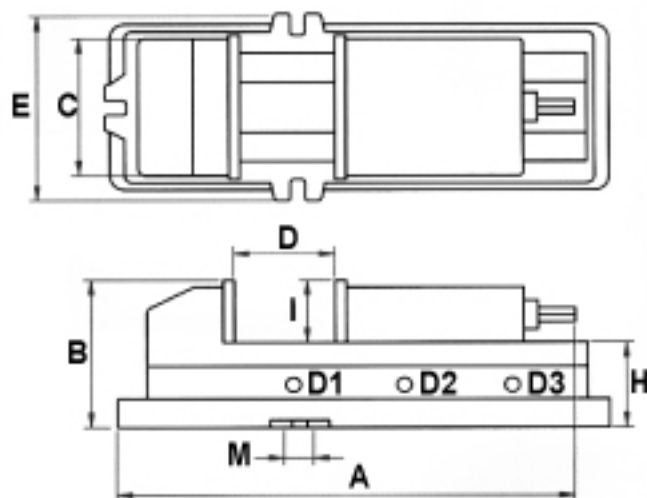
*Above information are for reference only. The Accessory design, specifications and construction are subject to change without prior notice.



TAIWAN TOOL

Milling Machine Accessories / Vise

Big Opening Milling Vise (With base plate) <<< FJ-400/600 >>>



Specifications:

Unit:mm

Model	A			B	C	D			E	H	I	M	N.W. (kg)
	D1	D2	D3			D1	D2	D3					
FJ-400	405	470	535	95	105	0-60	60-130	130-190	163	58	37	16	17
FJ-600	495	600	700	132	148	0-95	95-195	195-295	200	78	54	20	34

*Above information are for reference only. The machine design, specifications and construction are subject to change without prior notice.



TAIWAN TOOL

Milling Machine Accessories / Vise

A-Type Milling Vise ◀◀◀◀ AT-150 ▶▶▶▶

Features:

- 1-Vise Body made from High Grade Iron for Rigidity
- 2-Low Overall Height.
- 3-Moving Jaw runs in long prismatic slides with provision for wear adjustment.
- 4-Hardened and Ground Steel Jaw Plates supplied as standard.
- 5-Totally enclosed ACME screw with Phosphor Bronze Nut.
- 6-Supplied Complete with Drop Forged Handle.
- 7-Adjustable Positioner.
- 8-Optional Swivel Base.



Optional Accessories:

- Swivel Base
- Model:AT-150B



Specifications:

Model	AT-150
Width of jaws	150 mm
Max jaw opening	165 mm
Depth of jaws	50 mm
Overall size of base	440x220 mm
Overall height	100 mm
Clamp bolt centres	195x395 mm
Nett weight (kg)	35 mm

*Above information are for reference only. The machine design, specifications and construction are subject to change without prior notice.



TAIWAN TOOL

Milling Machine Accessories / Vise

6" Heavy Duty Precision Vise <<< KR-6 >>>

Features:

- 1-Stationary front jaw.
- 2-The back jaw moves along with the slide reducing the tendency towards deflection preventing the workpieces from tilting.
- 3-Jaws and body are steel construction.
- 4-Hardend & ground on all sliding contacting surface.
- 5-Ideal for CNC application.

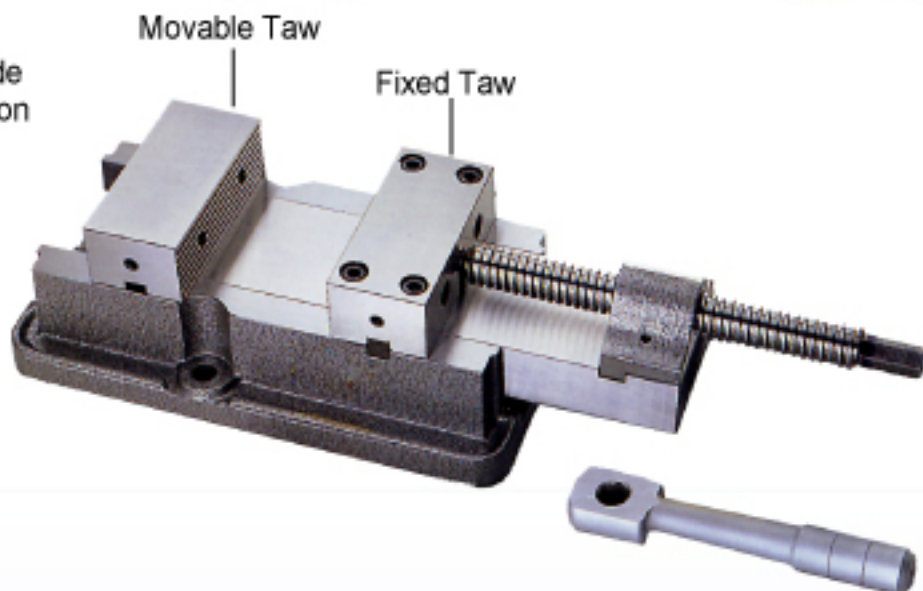
*Jaw width: 145mm(6")

*Jaw opening: 210mm(8-1/2")

*Jaw depth: 48mm(1-7/8")

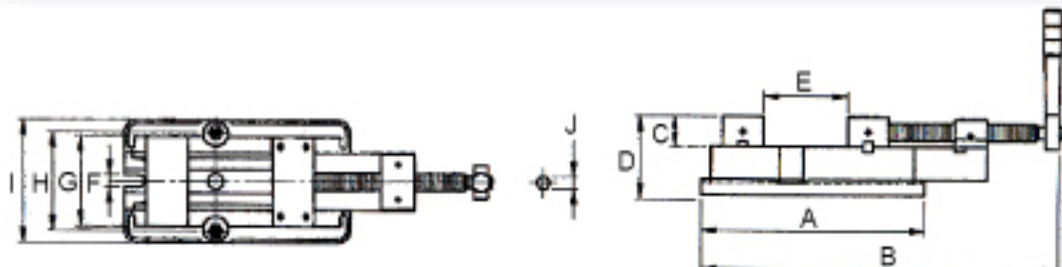
*Overall height: 127mm(5")

*Net weight (w/o swivel base): 40kgs



Specifications:

Model	A	B	C	D	E
KR-6	360	630	48	127	210
Model	F	G	H	I	J
KR-6	18	145	160	198	19

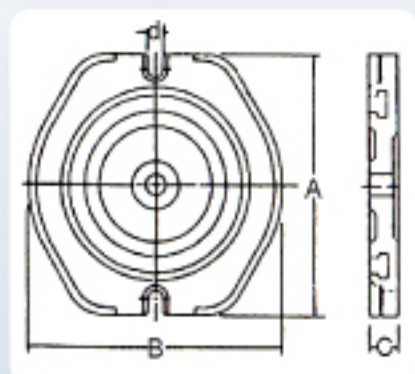


Optional Accessories:

Swivel Base

Specifications:

Model	A	B	C	Weight (kgs)
KR-6B	280	266	32	12



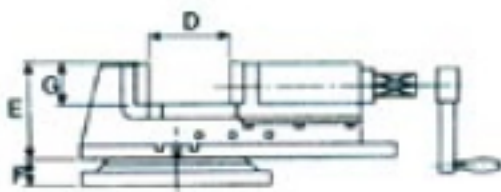
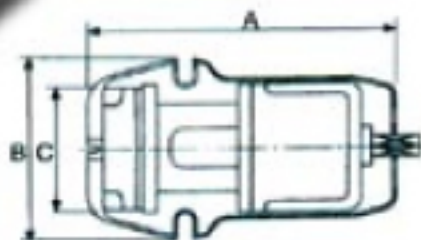
*Above information are for reference only. The machine design, specifications and construction are subject to change without prior notice.



TAIWAN TOOL

Milling Machine Accessories / Vise

SUPEROPEN MILLING VISE ◀◀◀ ◀ JV-100~JV-150 ▶



MODEL NO.	A	B	C	D	E	F	G	Weight (kg)
JV- 100	390	164	110	180	95	41	37	21
JV- 130	450	194	130	235	114	42	48	32
JV- 150	540	200	152	300	131	42	54	45

*Above information are for reference only. The machine design, specification as and construction are subject to change without prior notice.



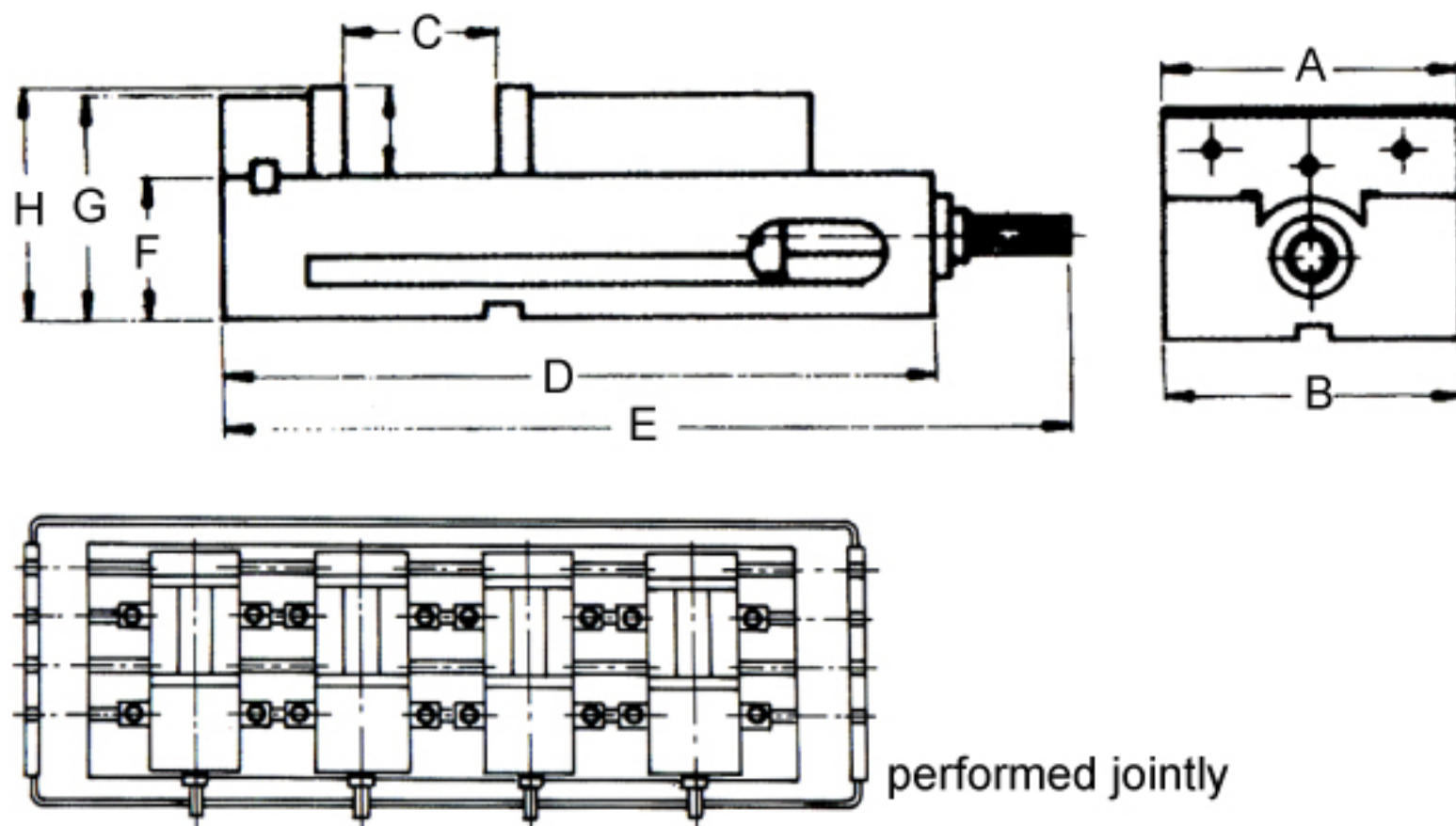
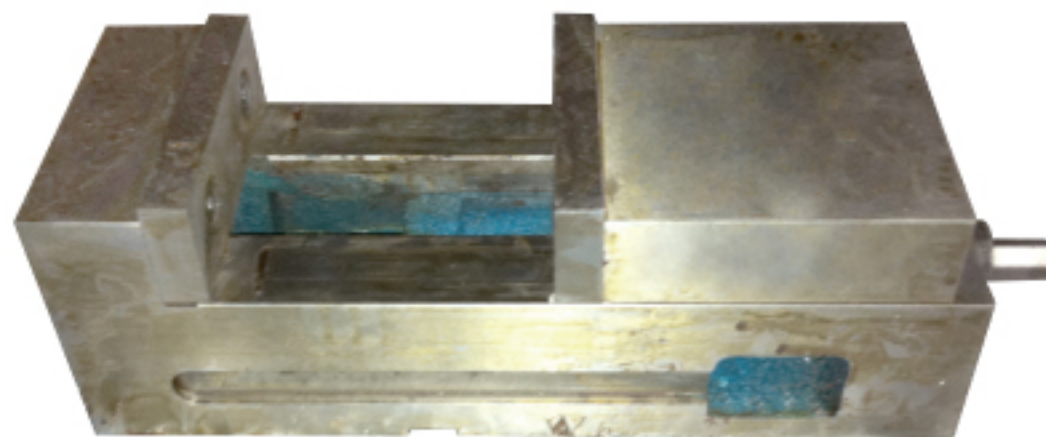
TAIWAN TOOL

Milling Machine Accessories /Vise

Horizontal Angle Lock Vise ◀◀◀◀ CR-4/6 ▶▶▶▶

Features:

- A: With the ability of lock-fixed ||| 2, 3, 4, 5...
- B: Use the semi-sphere segment principle.
- C: When operate several vises (in a row) put on one machining bed, the using situation is showed as following:
- D: Key is available to supply, on request ; if needed , please advise.



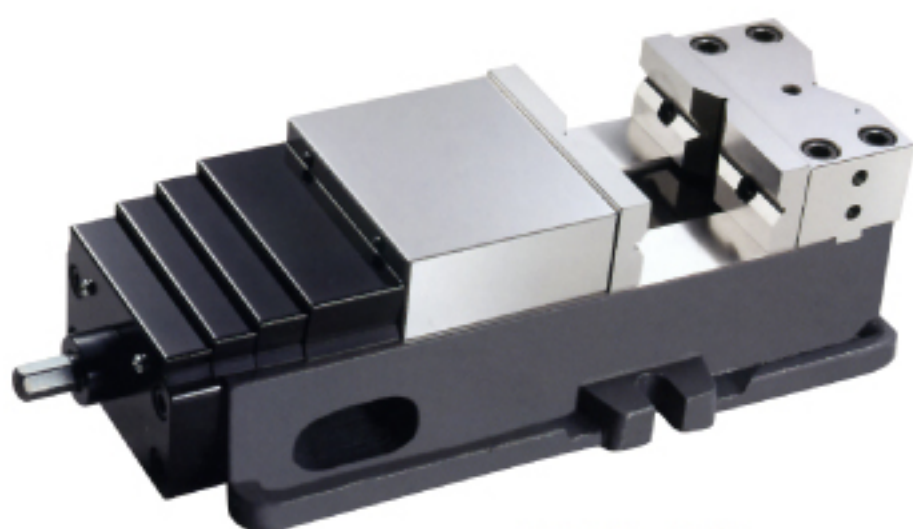
Specifications:

Model	Jaw width	Length	Height	Jaw height	Jaw opening	Key	Weight (kg)
CR-4	100	330	96	36	100	16	12.5
CR-6	150	425	120	44	150	16	27

*Above information are for reference only. The machine design, specifications and construction are subject to change without prior notice.



Precision Angle Lock Vise (Oversize Mouth) Heavy duty < SCH-6'' / SCH-8'' >



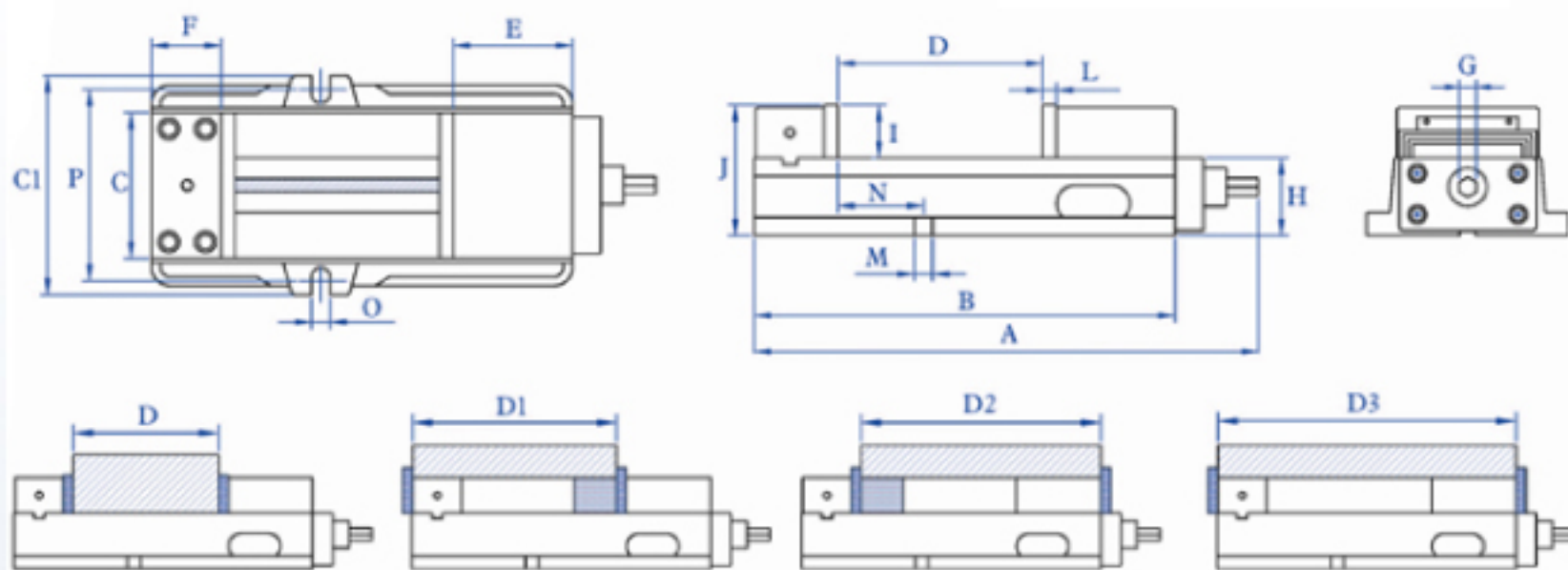
SCH-6''



SCH-8''

Feature :

1. Delicately designed structure, ensures working precision and enhances rigidity for long service life.
2. Fast switch and high compatible module.
3. Front chip cover equipped to protect leadscrew from swarf.
4. Rear chip cover adopted, prevents chips getting into the vise.
5. A variety of fixed plates fit many different clamping needs.



Model	A	B	C	C1	D	D1	D2	D3	E	F
SCH-6	550	460	158	240	230	310	335	435	120	75
SCH-8	630	540	200	305	260	345	405	510	150	76

Model	G	H	I	J	L	M	N	O	P	Weight
SCH-6	19	85	58	143	15	18	93.5	20	215	50kg
SCH-8	19	85	66	151	20	18	142	20	266	71kg

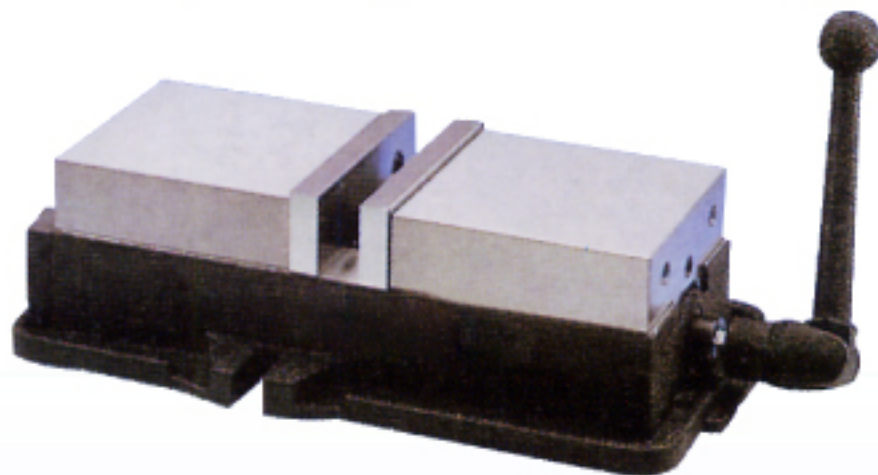
*Above information are for reference only. The accessory design, specifications and construction are subject to change without prior notice.



TAIWAN TOOL

Milling Machine Accessories / Vise

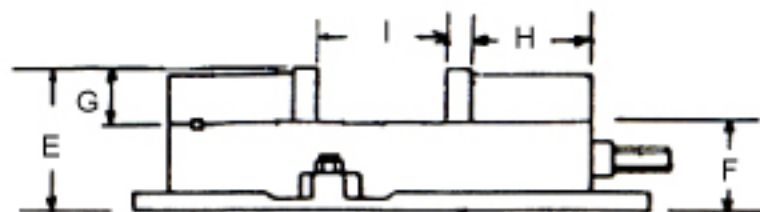
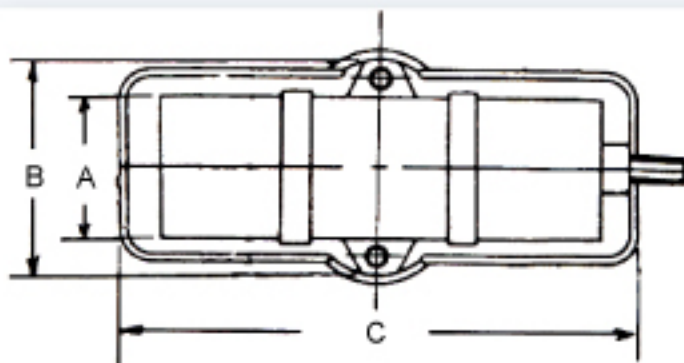
Compound ang-fixed Vise <<<< BO-8 >>>>



Specifications:

Unit:mm

Model	A	B	C	E	F	G	H	I	N.W. (kgs)
BO-8	200	260	530	143	85	58	140	210	65





TAIWAN TOOL

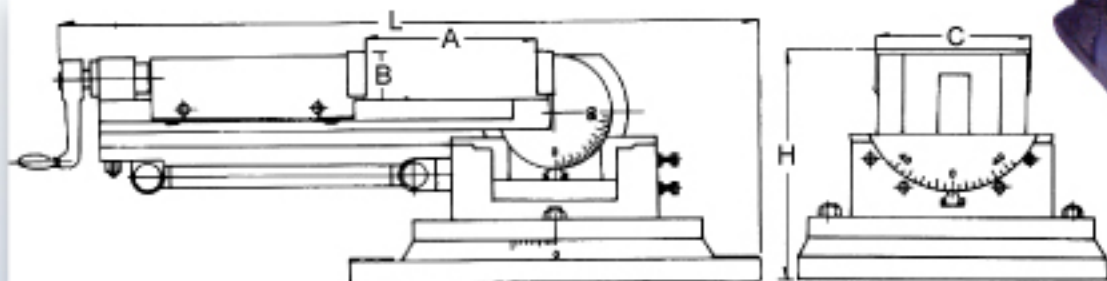
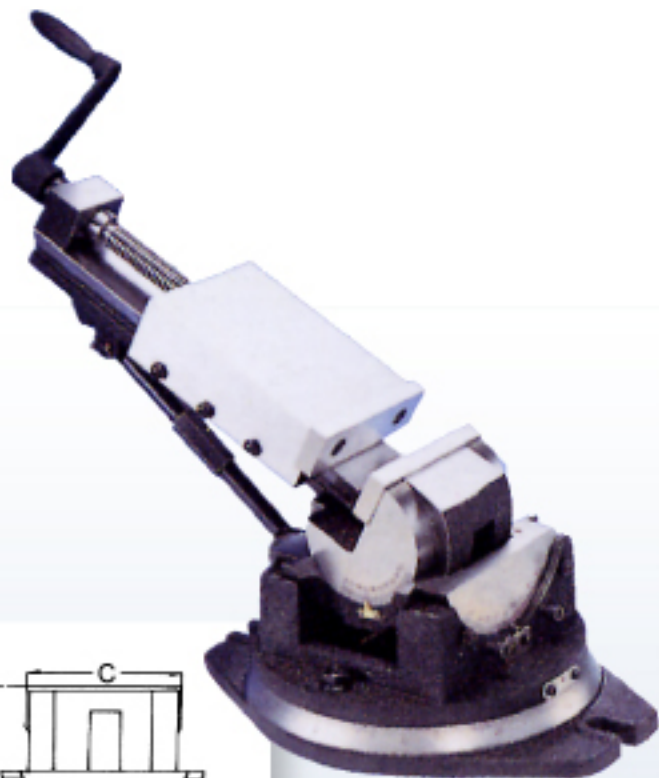
Milling Machine Accessories / Vise

3 Way Milling Vise <<<< CY-3/4/5 >>>>

Specifications:

Unit:mm

Model	A	B	C	H	L	N.W. (kgs)
CY-3	90	30	80	150	396	20
CY-4	105	38	106	172	460	40
CY-5	140	40	132	205	625	60



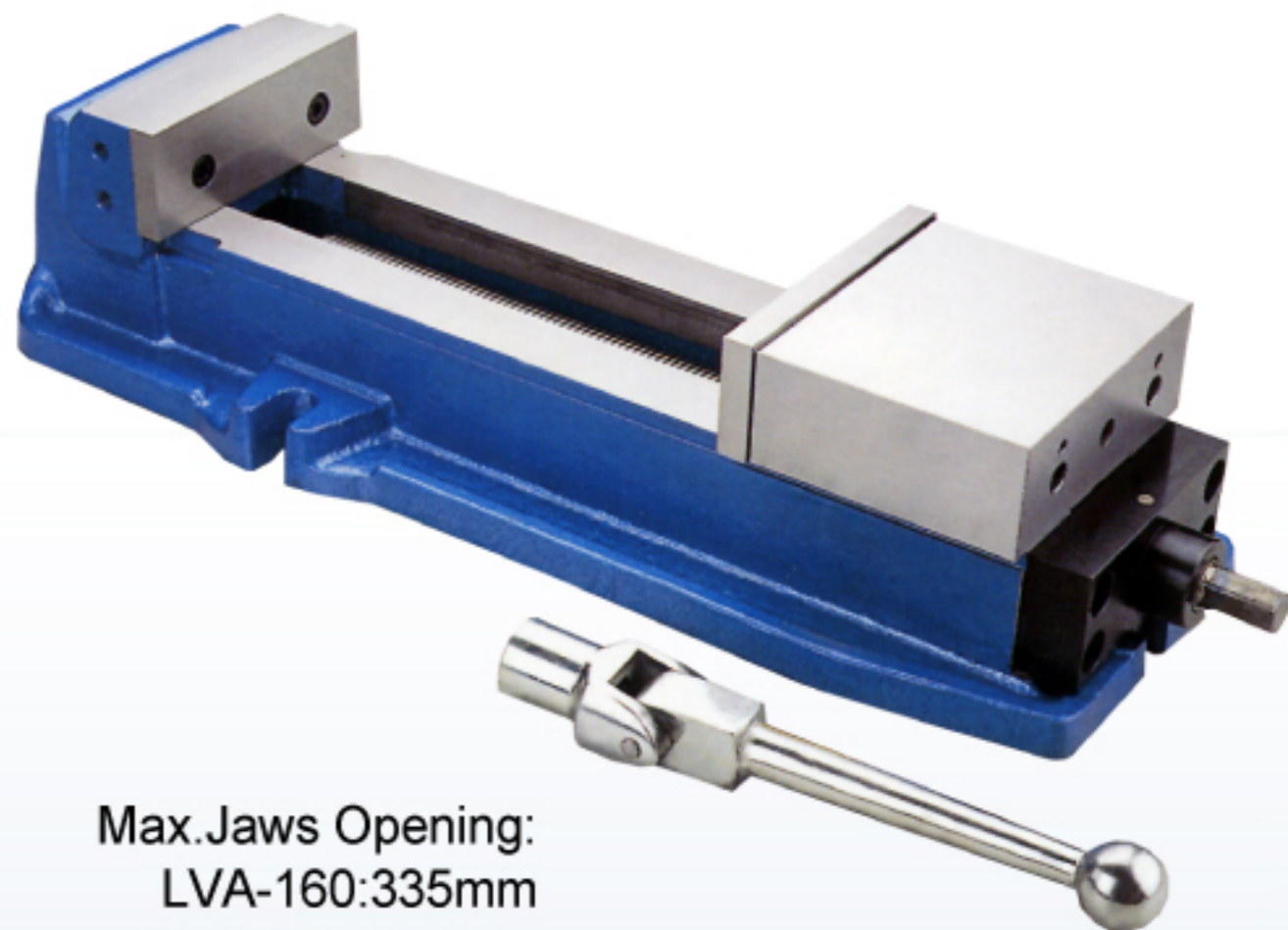
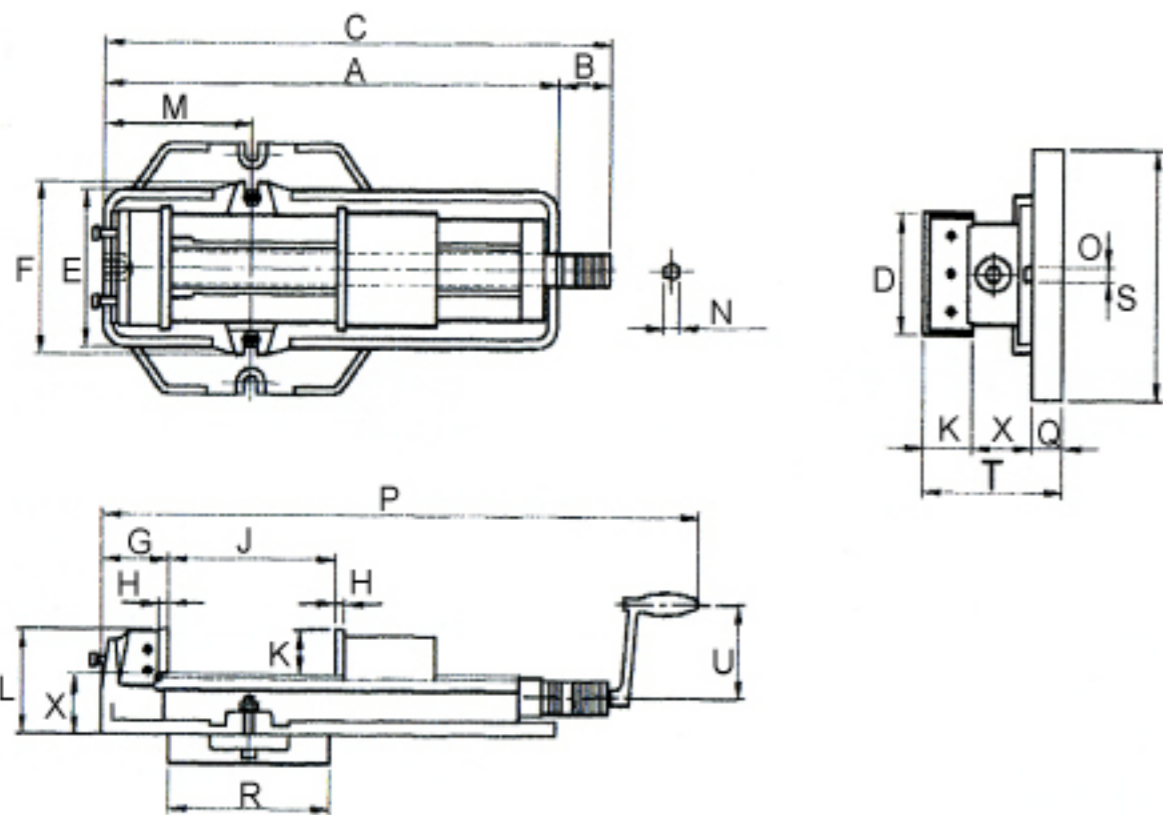
*Above information are for reference only. The machine design, specifications and construction are subject to change without prior notice.



TAIWAN TOOL

Milling Machine Accessories /Vise

Big opening precision Vise <<<< **LVA-160/200** >>>>



Max. Jaws Opening:
LVA-160:335mm
LVA-200:360mm

Specifications:

Unit:mm

Model	A	B	C	D	E	F	G	H	J	K	L	M	N	O	P	Q	R	S	T	U	X
LVA-160	600	66	666	160	210	240	100	15	0-335	58	140	190	19	18	689	38	320	340	178	230	82
LVA-200	700	66	766	200	240	280	150	18	0-360	63	163	265	19	18	780	46	365	400	205	230	100

*Above information are for reference only. The machine design, specifications and construction are subject to change without prior notice.



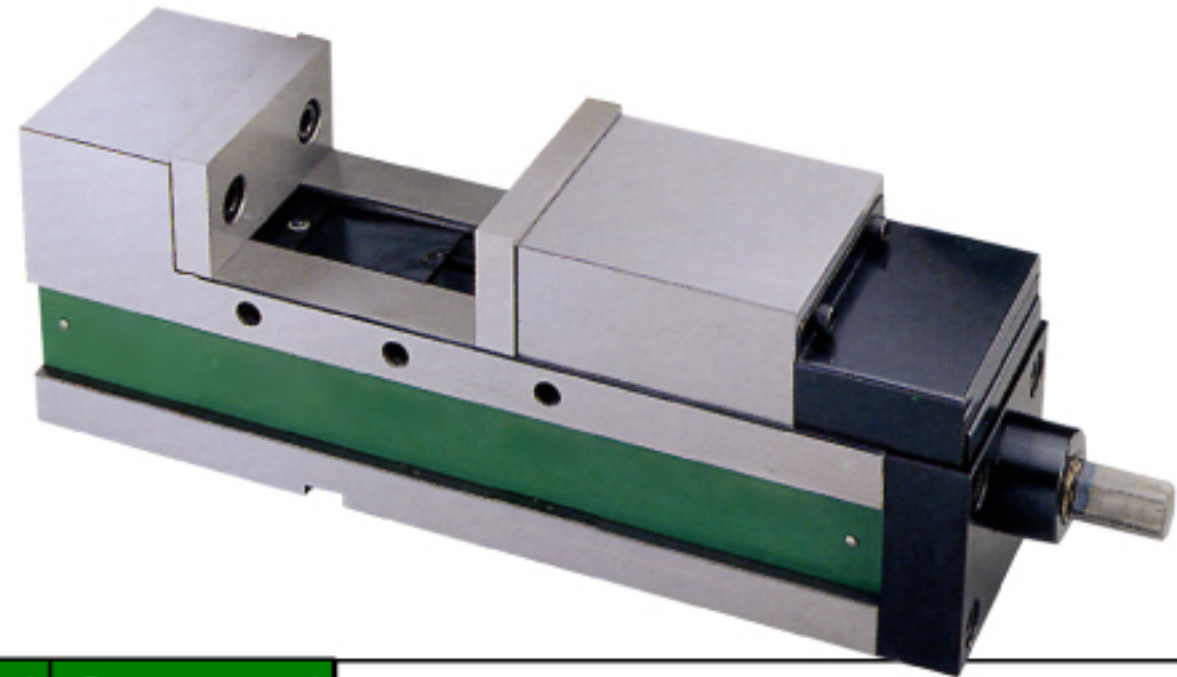
TAIWAN TOOL

Milling Machine Accessories / Vise

Precision compact Vise <<<< BV-100V~200V >>>>

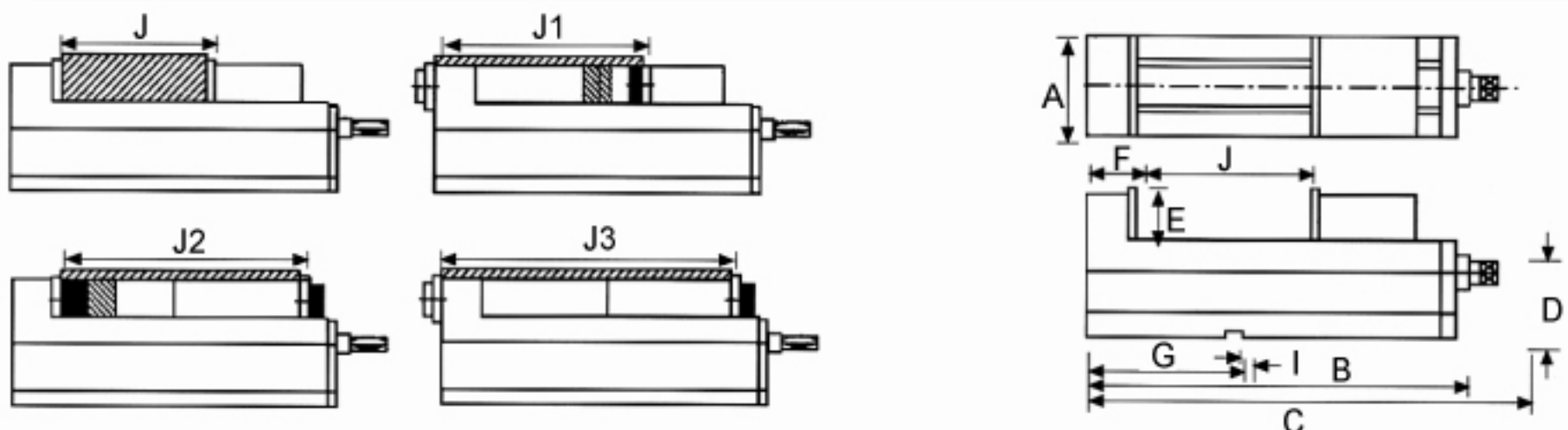
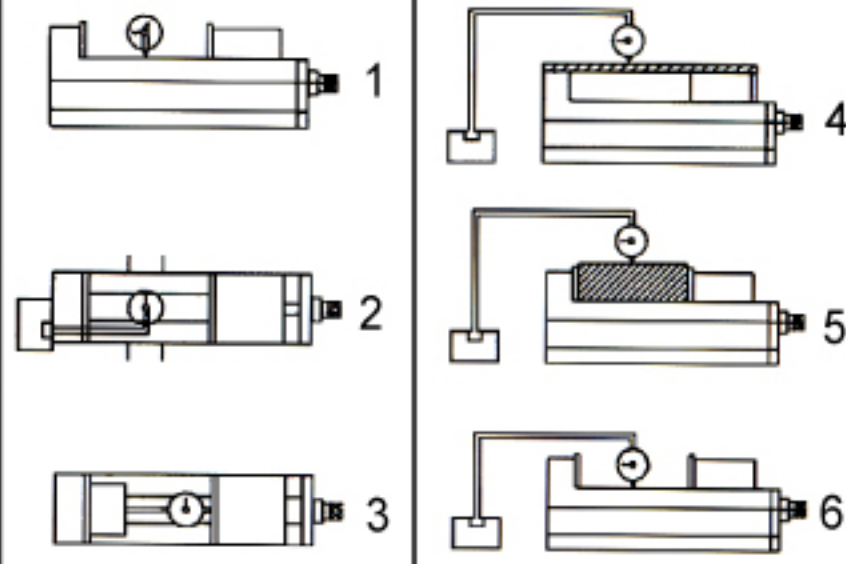
Features:

- 1-One piece casting of vise bed and flexed jaw.
- 2-Down thrust "Semis-sphere Segment" mechanism-eliminates jaw lift and work tilt
- 3-Rigid material-vise body of ductile iron FCD60JIS (equal to GGG60) with 60 kgs/mm² or 80,000 psi tensile strength.
- 4-Vise bed frame with harden treatment up to HRC 45° and up takes up wear and maintain accuracy for long



Accuracy testing standard:

NO	Item	JIS grade 1	Guaranteed
1	Vise side-lock on bottom slide way square	0.02 100mm	0.01 100mm
2	Keyways on bottom of vise bed square to clamping surface of jaw plate	0.02 100mm	0.015 100mm
3	Both jaw plate parallel	0.02 100mm	0.02 100mm
4	Max opening test block parallel to bottom of vise body	0.05 100mm	0.03 100mm
5	Top of rectangular test block clamped tightly by jaw parallel to bottom of vise body	0.03 100mm	0.02 100mm
6	Surface of vise bed parallel to bottom of vise body	0.02 100mm	0.015 100mm



Specifications:

Unit:mm

Model	A	B	C	D	E	F	G	I	Jaw Opening (Max.)				Weight Body
									J	J1	J2	J3	
BV-100V	101	380	440	85	48	80	125	16	125	190	230	320	26 kgs
BV-130V	131	445	505	95	55	85	150	18	190	240	290	380	39 kgs
BV-160V	161	535	595	105	58	100	165	18	250	330	370	480	59 kgs
BV-200V	210	610	670	110	63	108	190	18	290	370	430	550	80 kgs

*Above information are for reference only. The machine design, specifications and construction are subject to change without prior notice.

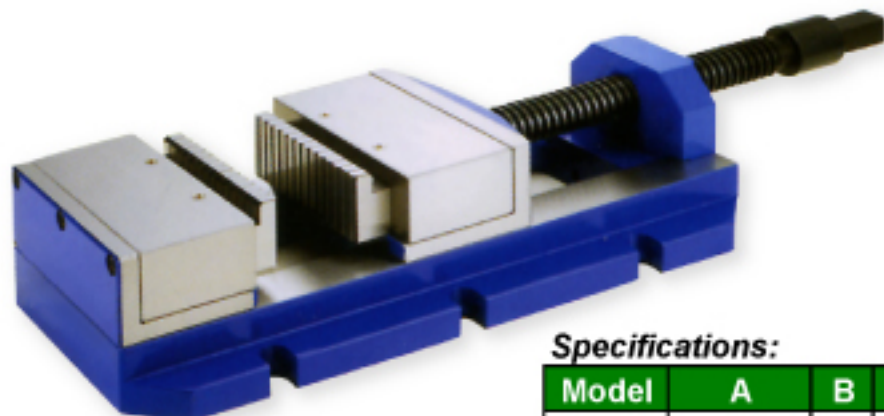


TAIWAN TOOL

Milling Machine Accessories / Vise

Multiple Function Vise Changeable Mouth FMV-5" Magical Jaw Vise

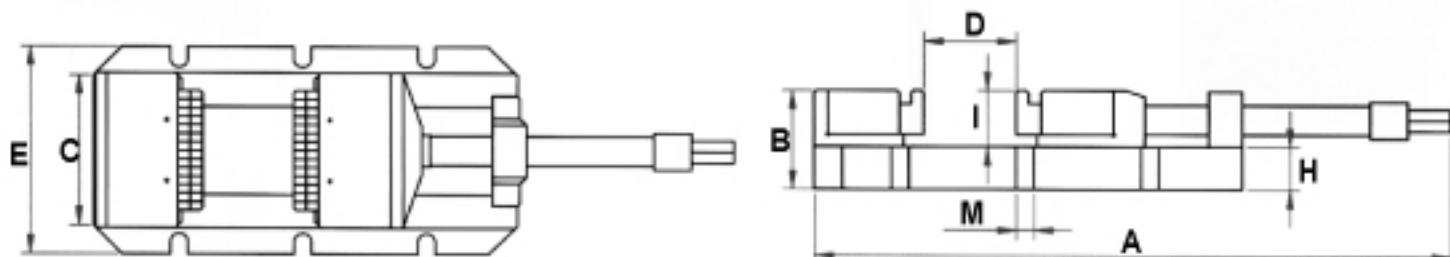
◀◀◀ FMV-5 ▶▶▶



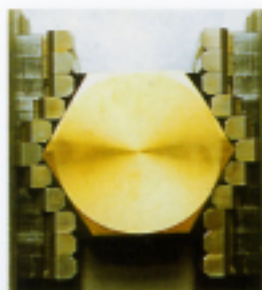
Specifications:

Unit: mm

Model	A	B	C	D	E	H	I	M	N.W. (kg)
FMV-5	450-572	81	127	0-122	170	35	46	14	17



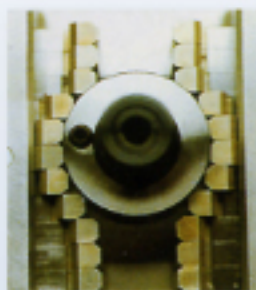
*Ball shape holding



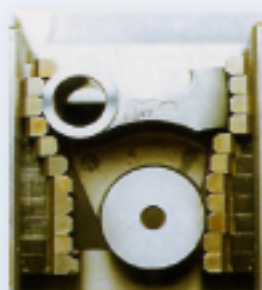
*Hexagon holding



*Irregular shape holding



*Round shape holding



*Irregular shape holding



*Curve shape holding

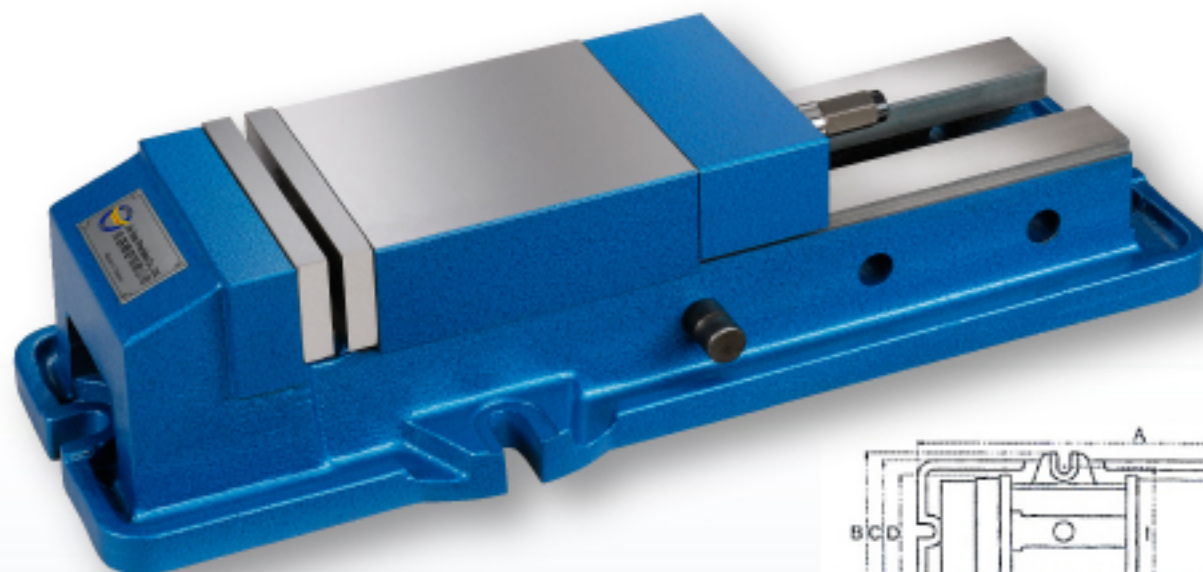
*Above information are for reference only. The machine design, specifications and construction are subject to change without prior notice.



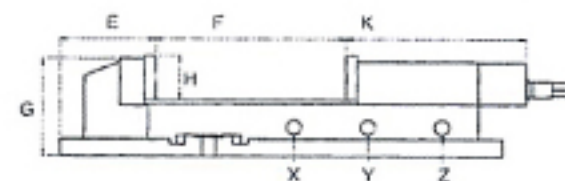
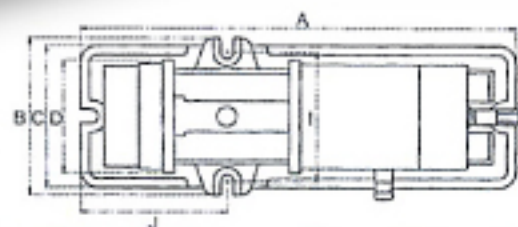
TAIWAN TOOL

Milling Machine Accessories / Vise

Hyd.Angle Lock Vise(Built-In type) <<< HN-600 / HN-800 >>>



Down thrust with "semi-sphere" to prevent work-piece lift.



Features:

1. Down thrust with "semi-sphere" to prevent work-piece lift.
2. Vise body is made of ductile iron FC 30.
3. Vise slide-chunk can take out, Convenient to clean away chips and inside of vise.

MODEL	A	B	C	D	E	F	G	H	I	J	K	X	Y	Z	PRESSURE	N.W.
HN-600	618	226	204	150	134	0-300	140	57	186	209	252	0-100	100-200	200-300	4500kgf	55kg
HN-800	695	278	230	200	148	0-300	157	64	237	260	270	0-100	100-200	200-300	8000kgf	92kg

*Above information are for reference only. The machine design, specifications and construction are subject to change without prior notice.



TAIWAN TOOL

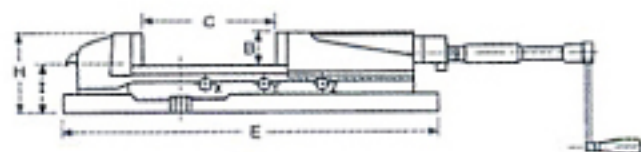
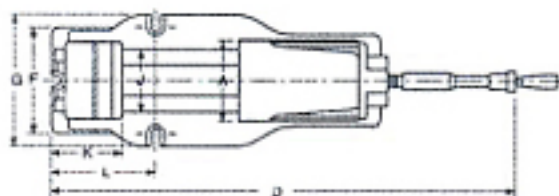
Milling Machine Accessories / Vise

Hyd.Machine Vise(Built-In Type) <<<< BT-40~80 >>>>



Features:

1. Suite for use on Machining Center, Mill.
2. The vise is adopted with high tension to avoid deformed.
3. Only little carry out that it can has strong clamping.
4. Easy operate, quick change.



MODEL	A	B	C	D	E	F	G	H	I	J	K	L	Clamping range			Clamping force(kgf)	Weight(kg)	
													X position	Y position	Z position		Table	Disk Rotary
BT-40	105	36	170	525	440	135	170	95	58	80	95	147	0-57	55-114	112-170	2500	21	7
BT-50	130	48	220	670	550	175	207	120	71.5	97	107	195	0-73	72-146	145-220	3000	38	8
BT-60	150	53	300	800	620	182	225	135	82.5	116	117	210	0-100	98-200	198-300	4500	53	11
BT-80	200	62	300	900	680	260	280	162	100	160	150	260	0-100	99-200	198-300	8000	95	13

*Above information are for reference only. The machine design, specifications and construction are subject to change without prior notice.



TAIWAN TOOL

Milling Machine Accessories / Vise

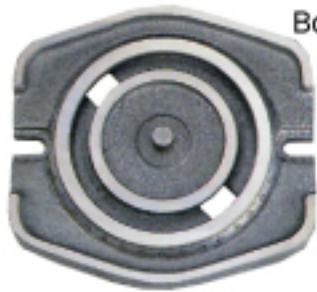
AH-Type hydraulic Vise <<<< AH-4/5/6/8 >>>>

Hydra. Booster provides a steady clamping force against shocks and vibrations during the operations, since it fastens the work piece resiliently with and aid of the disc-springs mounted inside.

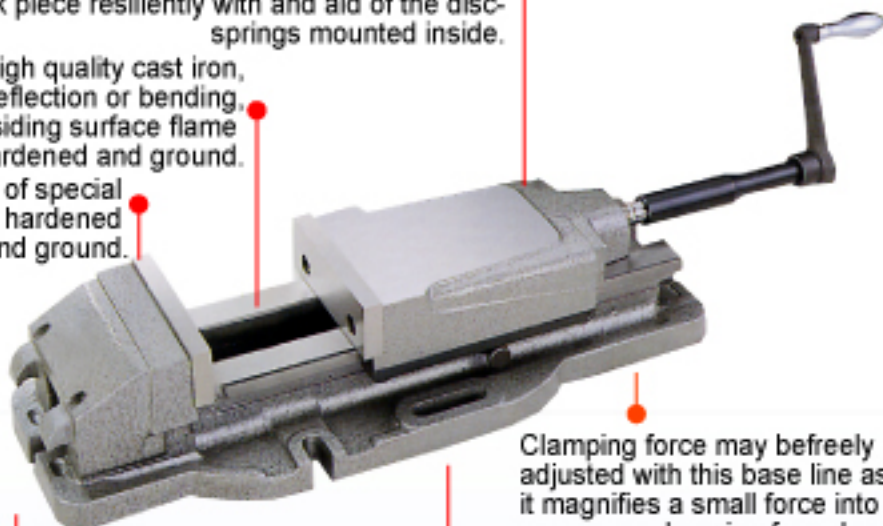
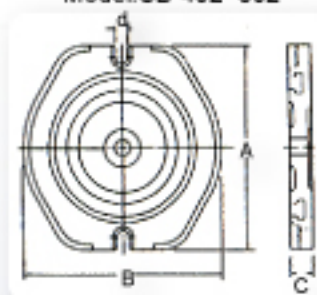
Body is made of high quality cast iron, which resists deflection or bending, and its siding surface flame hardened and ground.

Jaws are made of special steel, which is hardened and ground.

Optional Accessories:



Swivel Base
Model: SB-402~802



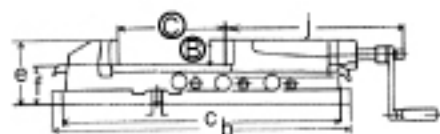
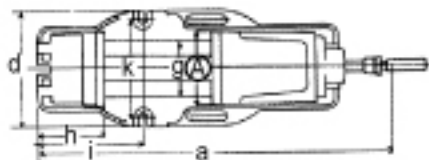
Clamping force may befreely adjusted with this base line as a guide. it magnifies a small force into an enormous clamping force by virtue of its unique Hydra. Bosster incorporated.

With hydra. Power Machine Vise, auxiliary wquipment such as a hydraulic pump, hose and air compressor are no longer needed.

It makes possible 3-range jaw opening variation where maximum openign attained is 3 times as that of normal machine vises.

Optional Accessories:

MODEL	A	B	C	Weight(kg)
SB-402	240	222	25	7
SB-502	280	266	32	12
SB-602	330	310	35	16
SB-802	375	355	40	16



Specifications:

Unit:mm

Model	A	B	C	a	b	c	d	e	f	g	h	i	j	k	Max Clamg force (kgf)	Weight (kg)	
																Body	Swivel Base
AH-4	100	36	170	525	430	130	160	94	60	78	100	155	263	120	2500	18	7
AH-5	125	46	220	670	540	165	185	118	72	97	117	185	341	145	3500	34	12
AH-6	150	51	300	800	620	200	240	133	82	116	125	247	380	200	5000	55	16
AH-8	200	62	300	900	700	240	280	162	100	160	165	266	435	240	8000	90	16

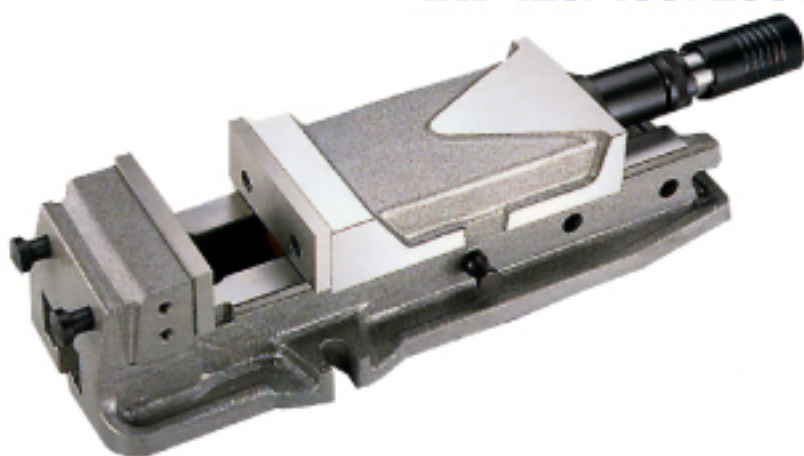
*Above information are for reference only. The machine design,specificationas and construction are subject to change without prior notice.



◀◀◀ HW-125/160/200 ▶▶▶

Features:

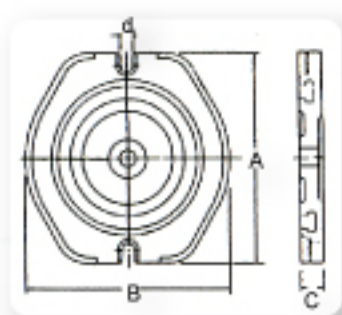
- 1-Rigid material vise body of ductile iron FCD60.
- 2-Down thrust "semi-sphere segment" mechanism-eliminates lift and work tilt.
- 3-Vise bed flange hardened to HRC 45 and up takes up wear and maintain accuracy for long life.
- 4-Max. hydraulic clamping force..., 4,000kgs.
- 5-Max. hydraulic & mechanical clamping force..., 6,000kg.



Optional Accessories:



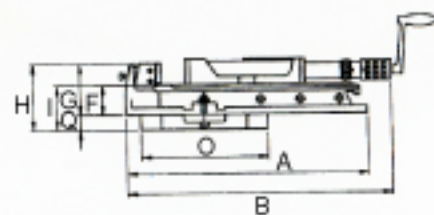
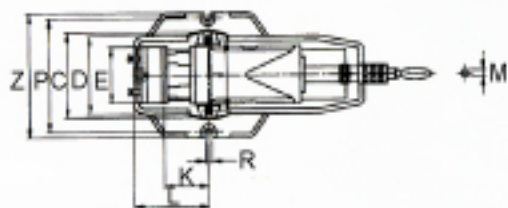
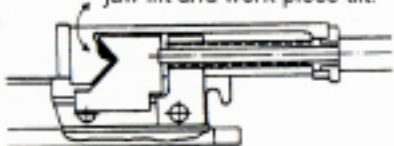
Swivel Base
Model: HW-125B~200B



Optional Accessories:

MODEL	A	B	C	Weight(kg)
HW-125B	280	266	32	12
HW-160B	330	310	35	16
HW-200B	375	355	40	16

Down thrust "semi-sphere segment" mechanism-eliminates jaw lift and work-piece tilt.



Unit/mm

MODEL	A	B		C	D	E	F	G	H	I	J	K	L	M	N	O	P	Q	R	Jaw	Jaw	Jaw
		Min	Max																	Width	Opening	Depth
HW-125	505	570	795	190	170	130	72	127	163	106	160	75	180	14	280	266	260	32	16	130	220	55
HW-160	605	625	935	240	210	160	82	140	175	117	192	101	195	14	334	320	310	35	18	160	310	58
HW-200	700	725	1035	280	240	200	100	163	205	146	240	115	265	14	420	420	390	50	18	200	310	63



TAIWAN TOOL

Milling Machine Accessories / Vise

AHV Type hydraulic Vise ◀◀◀ ◀ AHV-160 ▶

Features:

The unique features of AHV series provide the users an operation of ease and comfort.

1-Angle-lock type Hydraulic vise model:

AHV is mostly suitable for heavy duty cutting on Vertical Machining center.

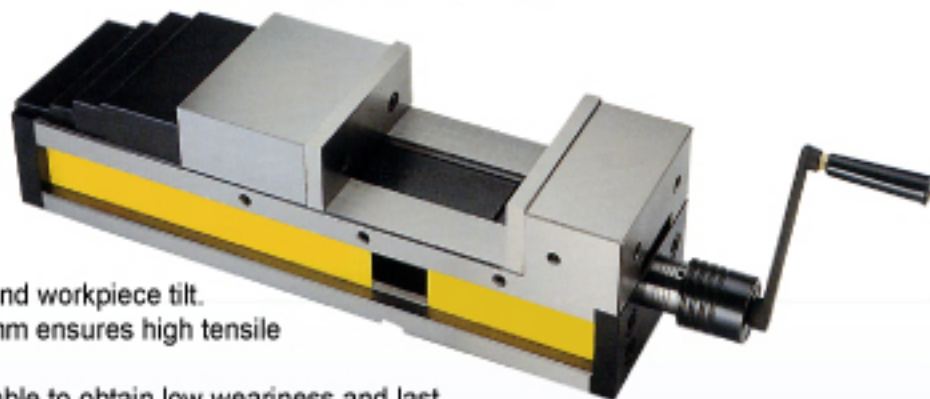
2-Semi-spherical segment eliminates jaw lifting and workpiece tilt.

3-Rigid material ductile iron FCD60 with 60Kgs/mm ensures high tensile strength, low weariness and not deformation.

4-Vise bed flame hardened to HRC 45 up is capable to obtain low weariness and last the high accuracy for long.

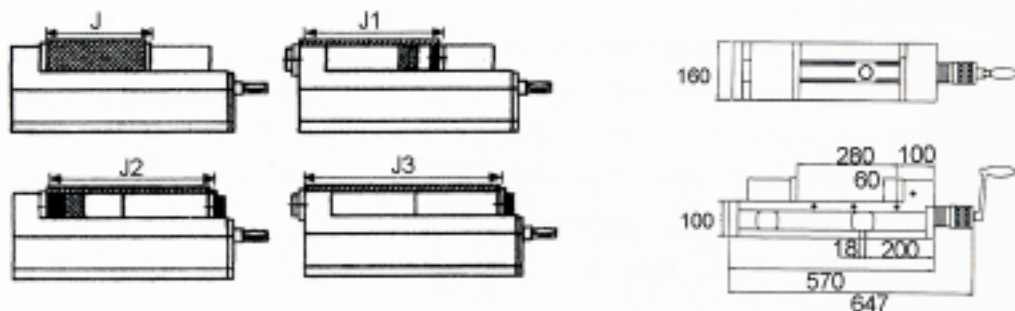
5-Four (4) different jaws set up can be obtained.

6-Chip covers is applied on this vise to prevent from chips falling to Leadscrew and inside of vise.



Specifications:

Model	AHV-160
Jaw width	160 mm
Jaw opening	280 mm
Depth of jaw	60 mm
Jaw width	160 mm
Jaw opening	280 mm
Depth of jaw	60 mm



*Above information are for reference only. The machine design, specifications and construction are subject to change without prior notice.



TAIWAN TOOL

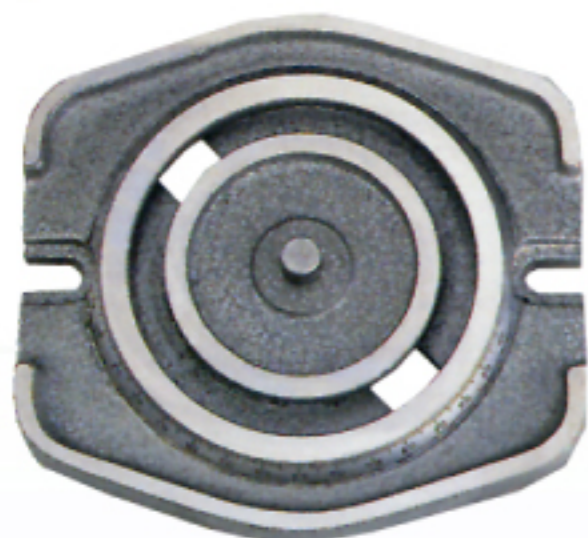
Milling Machine Accessories / Vise

AHT tilting hydraulic Vise ◀◀◀◀ AHT-4/6 ▶▶▶▶

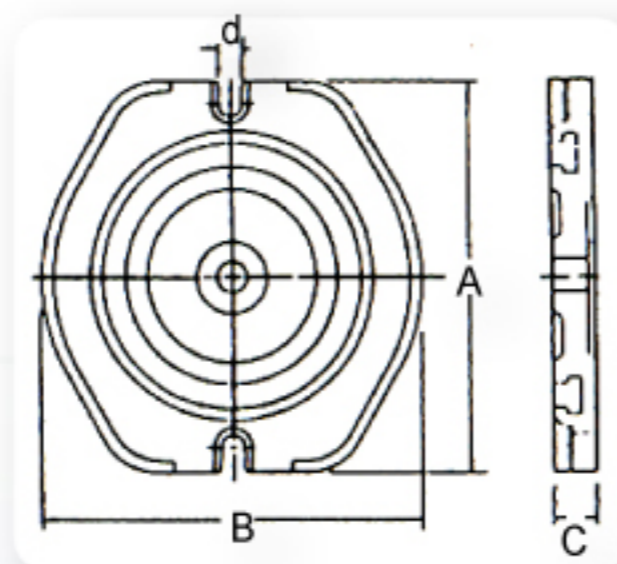
Features:

Different from other conventional milling vise, the angle vise makes angular settings in directions possible. The vertical angle can be setting from 0-50 of your need. Precise angular setting in plan can be read from the mounted scale.

Optional Accessories:

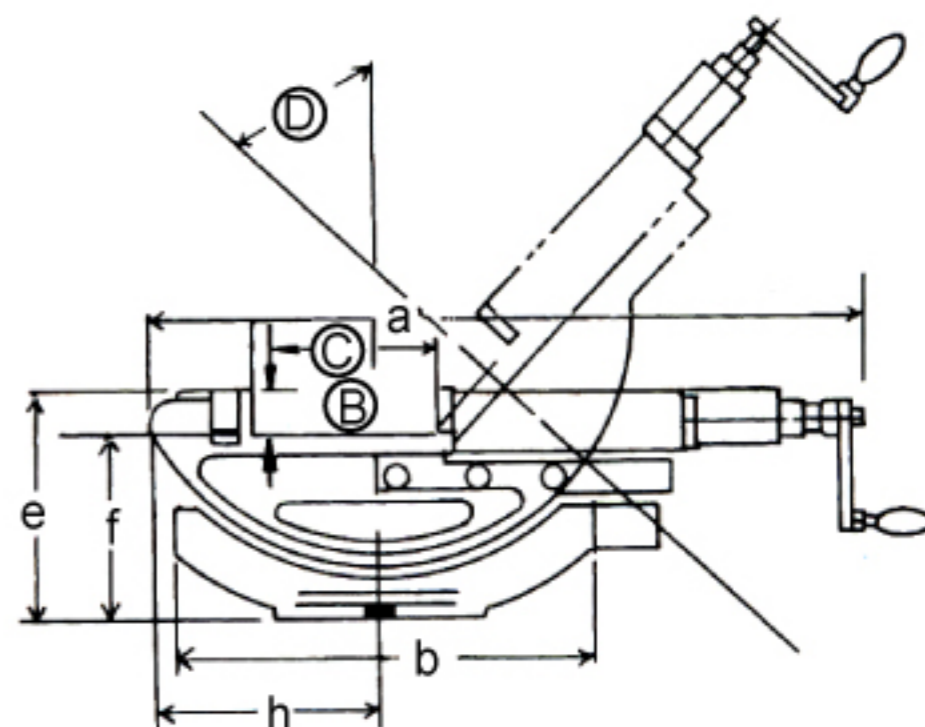
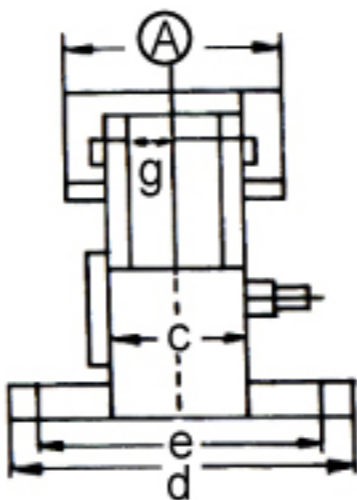


Swivel Base
Model:SB-402/602



Optional Accessories:

MODEL	A	B	C	Weight(kg)
SB-402	240	222	25	7
SB-602	330	310	35	16



Specifications:

Unit:mm

Model	A	B	C	D	a	b	c	d	e	f	g	h	Max Clamg force (kgf)	Weight (kg)	
														Body	Swivel Base
AHT-4	100	36	0-170	50°	505	325	65	160	177	141	80	184	2500	25	7
AHT-6	150	53	0-300	50°	775	410	95	240	237	186	100	240	4400	67	16

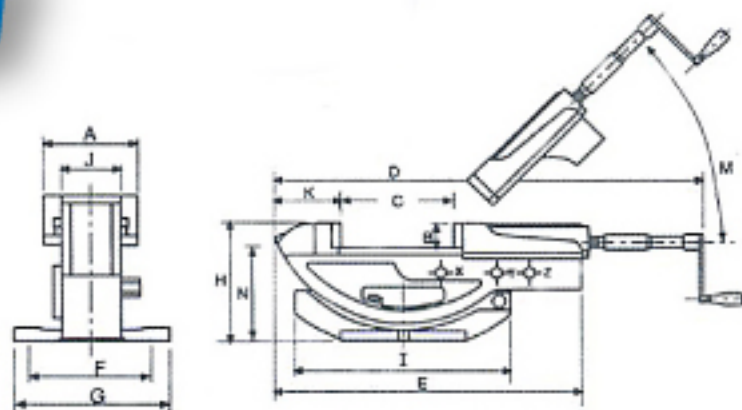
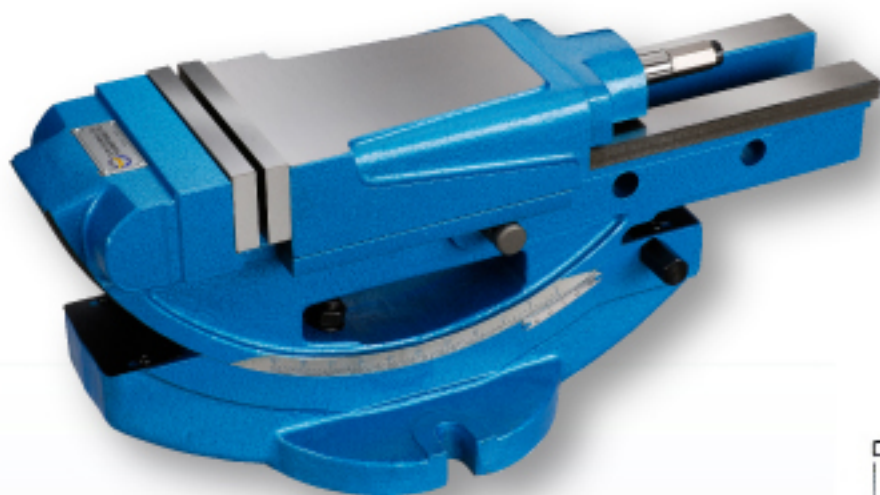
*Above information are for reference only. The machine design, specifications and construction are subject to change without prior notice.



TAIWAN TOOL

**Milling Machine Accessories
/ Vise**

Hyd. Inclined Vise <<<< BT-B-40/BT-B-60 >>>>



Features:

Easy to adjust the working angle for different requirement.

Vertical angle adjusting can be from 0~45degree, It can adjust the working angle directly.

MODEL	A	B	C	D	E	F	G	H	I	J	K	M	Clamping force(kgf)	Weight(kg)	
BT-B-40(4")	105	36	0-170	547	404	106	165	191	340	80	92	0~45°	2500	Body 26kg	Swivel base 7kg
BT-B-60(6")	150	53	0-300	790	580	165	225	250	435	116	123	0~45°	4500	Body 70kg	Swivel base 11kg

*Above information are for reference only. The machine design, specifications and construction are subject to change without prior notice.



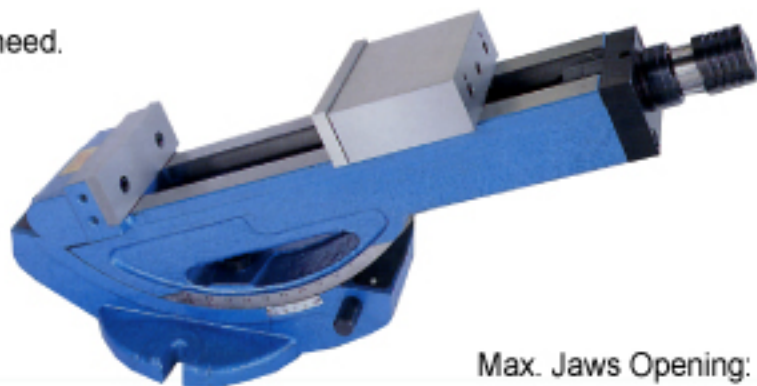
TAIWAN TOOL

Milling Machine Accessories / Vise

Big opening tilting hydraulic Vise ◀◀◀◀ **BHT-160** ▶▶▶▶

Features:

- 1-The Vertical angle can be Setting from 0-50° of your need.
- 2-Down thrust "Semis-sphere Segment" mechanism-eliminates jaw life and work tilt.
- 3-Rigid material-vise body of ductile iron FCD60JIS (equal to GGG60) with 60 kgf/cm² or 80,000 psi tensile strength.
- 4-Vise bed flame with harden treatment up to HRC 45° and up takes wear and maintain for long.

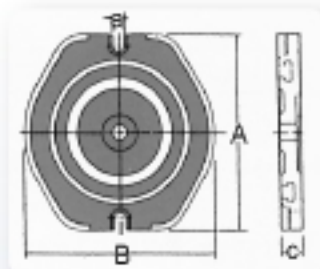


Max. Jaws Opening:
BHT-160:360mm

Optional Accessories:

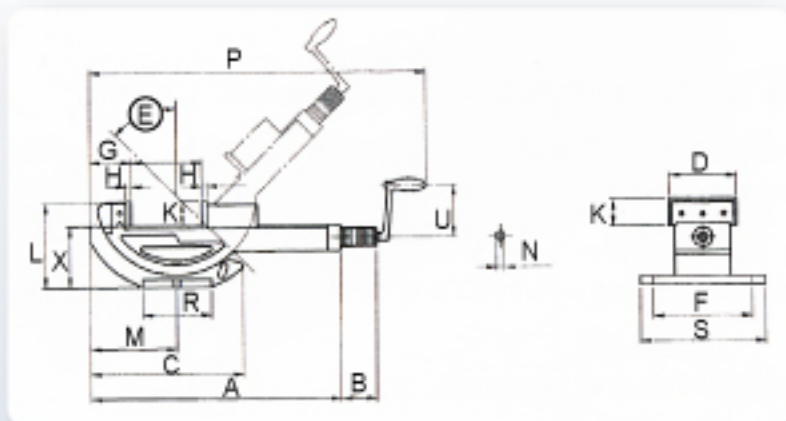


Swivel Base
Model:BHT-602



Optional Accessories:

MODEL	A	B	C	Weight(kg)
BHT-602	330	310	35	16



Specifications:

Unit:mm

Model	A	B	C	D	E	F	G	H	J	K	L	M	N	P	R	S	U	X
BHT-160	660	100	425	160	50°	185	130	15	9-360	58	248	212	14	870	240	240	130	190

*Above information are for reference only. The machine design, specifications and construction are subject to change without prior notice.



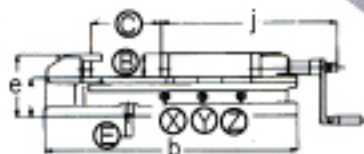
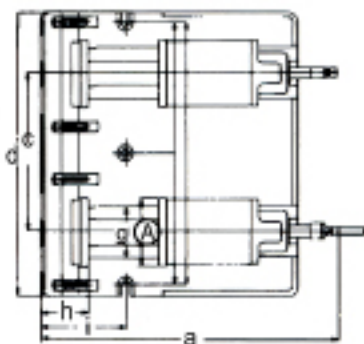
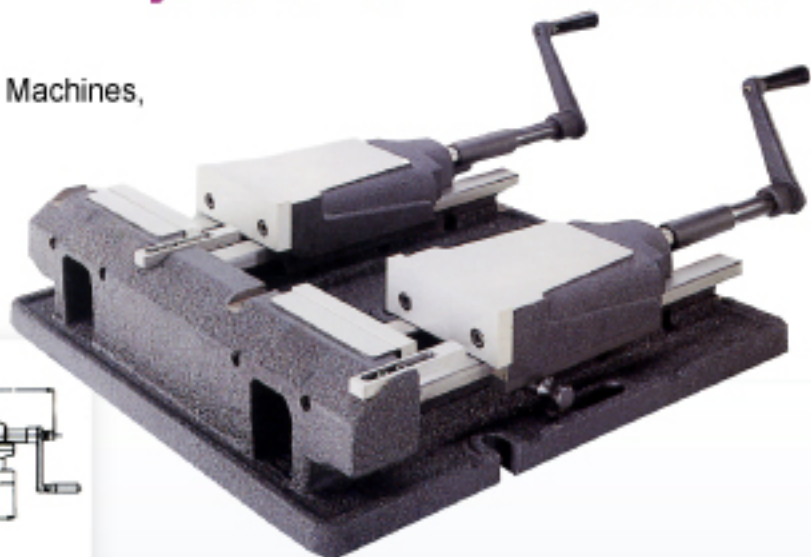
TAIWAN TOOL

Milling Machine Accessories / Vise

2P Hydraulic Vise <<<< AHG-2P-6 >>>>

Features:

- 1-The series are more preferable working in Milling Machines, NC & CNC Machines and Machining Centers.
- 2-These vises can firmly clamp various forms and sizes of workpieces, minimizing loading/unloading time.



Specifications:

Unit:mm

Model	A	B	C	a	b	c	d	e	f	g	h	i
AHG-2P-6	484	51	300	807	610	330	550	510	139	116	127	205

Model	Clamping range X	Clamping range Y	Clamping range Z	Clamping force (kg)	Weight (kg)
AHG-2P-6	0~100	98~200	198~300	5000	145

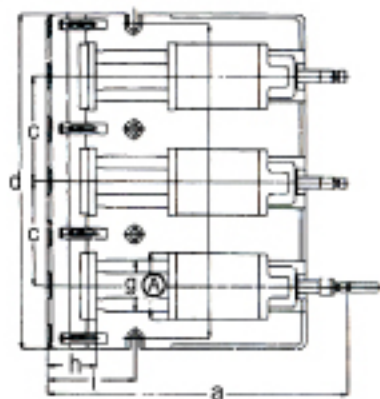
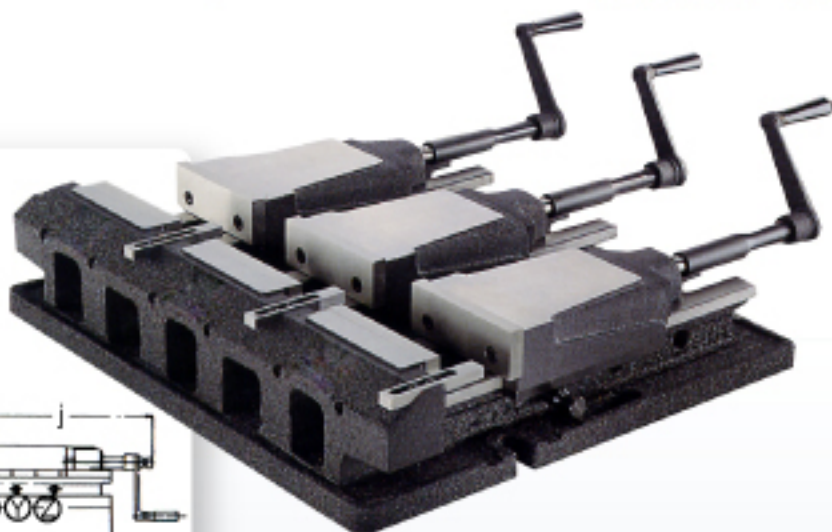
*Above information are for reference only. The machine design, specifications and construction are subject to change without prior notice.



TAIWAN TOOL

Milling Machine Accessories / Vise

3P Hydraulic Vise <<< AHG-3P-6 >>>



Specifications:

Unit:mm

Model	A	B	C	a	b	c	d	e	f	g	h	i
AHG-3P-6	594	51	300	807	610	220	660	620	139	116	127	205

Model	Clamping range X	Clamping range Y	Clamping range Z	Clamping force (kg)	Weight (kg)
AHG-3P-6	0~100	98~200	198~300	5000	215

*Above information are for reference only. The machine design, specifications and construction are subject to change without prior notice.



TAIWAN TOOL

Milling Machine Accessories / Vise

Air/Oil Hydraulic Vise <<<< HCK-408-AA~HCK-630-AO >>>>

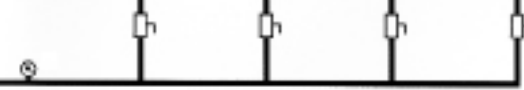
Conventional design is one to one.



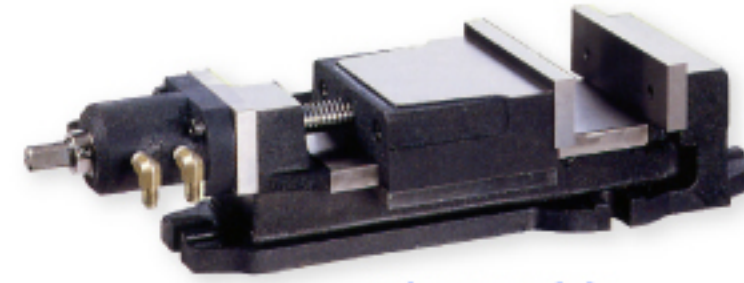
Air compressor



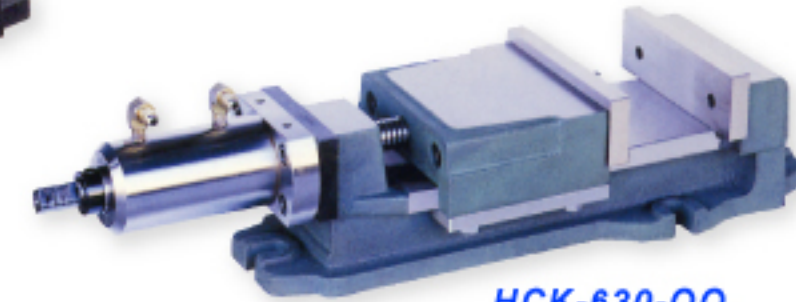
converter



*A design to connect many vises.



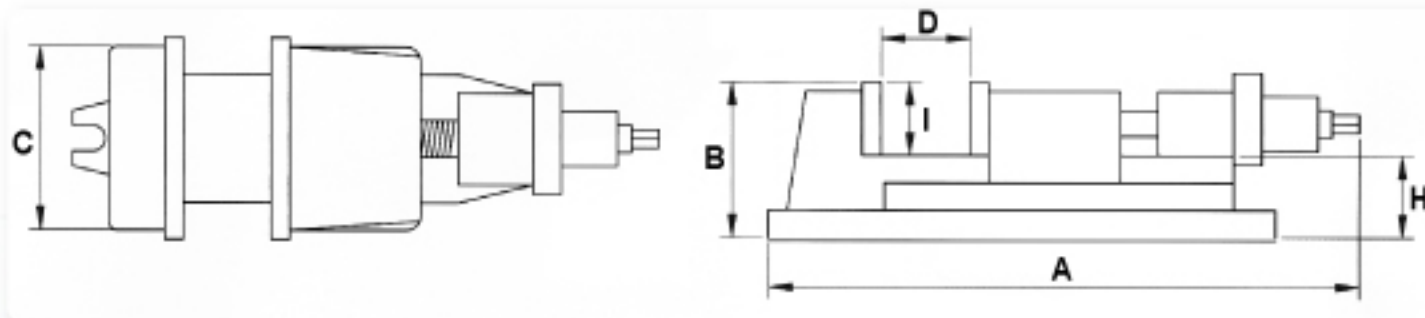
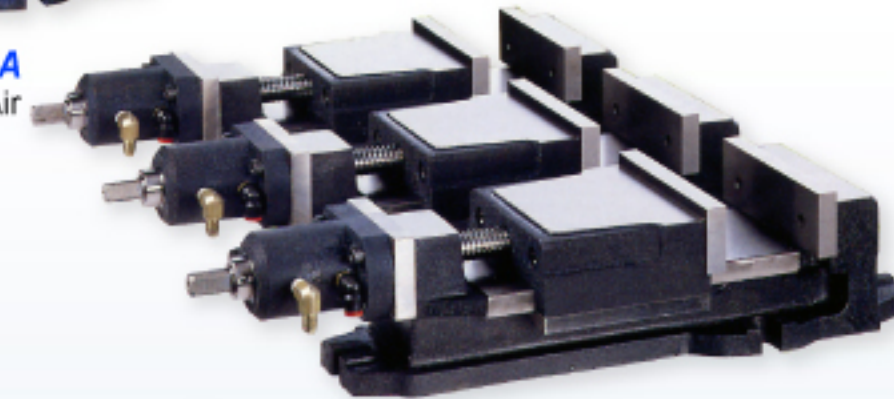
HCK-608-OO
8mm travelling oil to oil



HCK-630-OO
30mm travelling oil to oil



HCK-630-AA
Air to Air



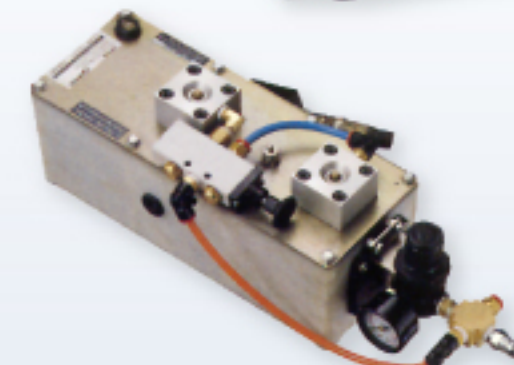
Specifications:

Unit: mm

Model	A	B	C	D	H	I	Clamping Force (kgf)	Travel	N.W. (kg)
HCK-408-AA	432	85	98	0-70	48	37	0-100	8	12
HCK-430-AA	502	85	98	0-70	48	37	0-100	30	14
HCK-508-AA	480	98	124	0-85	61	37	0-100	8	16
HCK-530-AA	550	98	124	0-85	61	37	0-100	30	18
HCK-608-AA	568	108	144	0-105	65	43	0-100	8	23
HCK-630-AA	638	108	144	0-105	65	43	0-100	30	25
HCK-408-OO	432	85	98	0-70	48	37	0-600	8	12
HCK-430-OO	502	85	98	0-70	48	37	0-600	30	14
HCK-508-OO	480	98	124	0-85	61	37	0-800	8	16
HCK-530-OO	550	98	124	0-85	61	37	0-800	30	18
HCK-608-OO	568	108	144	0-105	65	43	0-1000	8	23
HCK-630-OO	638	108	144	0-105	65	43	0-1000	30	25
HCK-408-AO	432	85	98	0-70	48	37	0-600	8	12
HCK-430-AO	502	85	98	0-70	48	37	0-600	30	14
HCK-508-AO	480	98	124	0-85	61	37	0-800	8	16
HCK-530-AO	550	98	124	0-85	61	37	0-800	30	18
HCK-608-AO	568	108	144	0-105	65	43	0-1000	8	23
HCK-630-AO	638	108	144	0-105	65	43	0-1000	30	25



*Hydraulic Pump Feeder



*Air/oil hydraulic converter
Made in Italy

Features:

- 1-Add a hydraulic unit to the conventional k type vise. This is the most convenient and economic way.
- 2-Most suitable for the clamping of light cutting, such as clamping aluminum or copper.

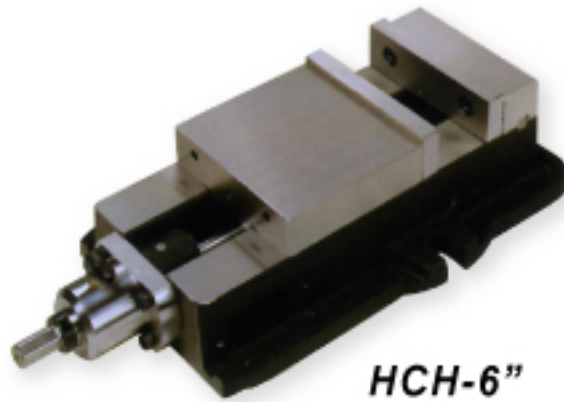
Note:

The HCK type is designed for lighter clamping. Check the pressure meter. Don not let the pressure of the air compressor over the limitation. For heavy clamping, please use NHCH series vises.

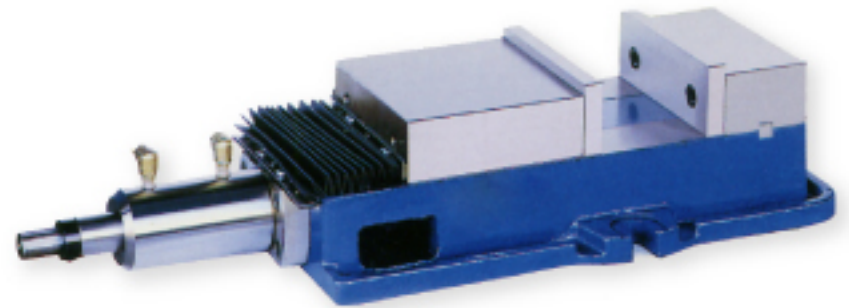
*Above information are for reference only. The machine design,specificationas and construction are subject to change without prior notice.



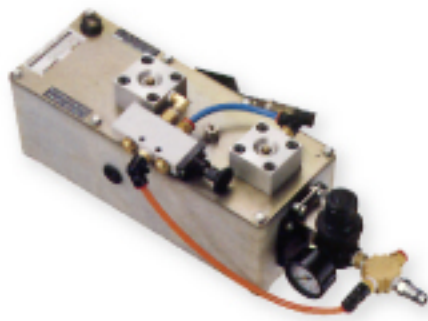
Air/Oil Fast Vise <<<< HNCH-408-AA ~ HCH-630-AO >>>>



HCH-6"



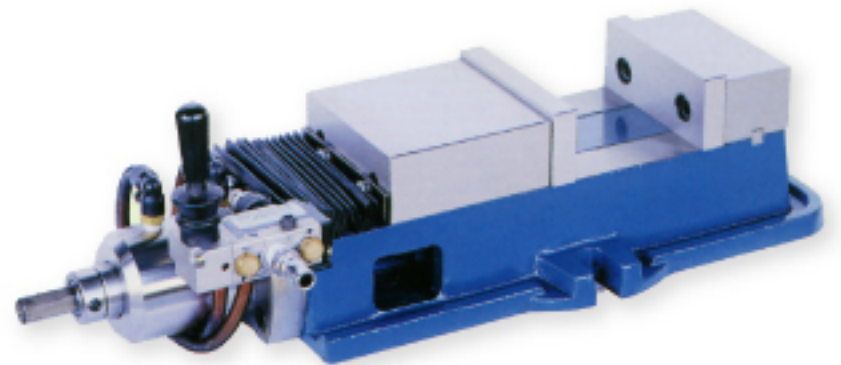
HNCH-4" (Oil to Oil)



*Air/oil hydraulic converter
Made in Italy



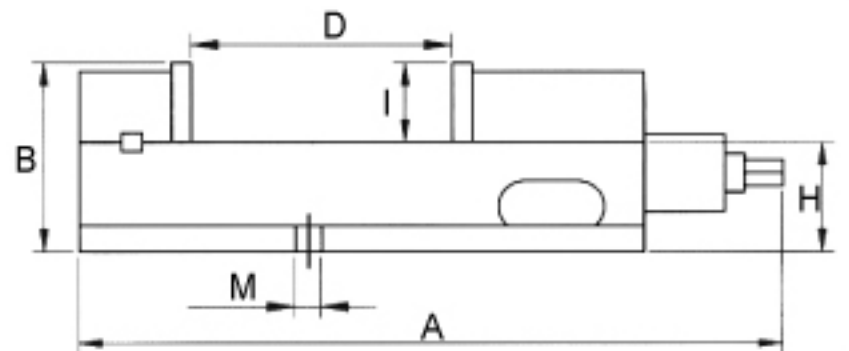
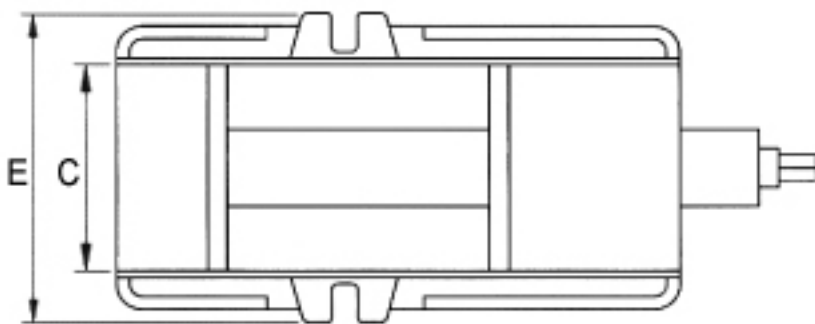
*Hydraulic Pump Feeder



HNCH-4" (Air to Air)

Features:

- 1-The conventional angle lock vise can be equipped with an air/oil converter to become a fast vise. It is easy to do, and save costs.
- 2-Processing speed is fast. This vise is necessary if you want to increase production quantity.



Specifications:

Unit: mm

Model	A	B	C	D	E	H	I	M	Clamping Force (kgf)	Travel	N.W. (kg)
HNCH-408-AA	482	104	104	0-125	180	59.80	44	16	0-100	8	20
HNCH-430-AA	552	104	104	0-125	180	59.80	44	16	0-100	30	22
HCH-608-AA	530	117	152	0-135	240	72.00	45	16	0-100	8	32
HCH-630-AA	600	117	152	0-135	240	72.00	45	16	0-100	30	34
HCH-408-OO	440	100	104	0-100	180	61.50	37	16	0-1000	8	18
HCH-430-OO	510	100	104	0-100	180	61.50	37	16	0-1000	30	20
HNCH-408-OO	482	104	104	0-125	180	59.80	44	16	0-1000	8	20
HNCH-430-OO	552	104	104	0-125	180	59.80	44	16	0-1000	30	22
HCH-608-OO	530	117	152	0-135	240	72.00	45	16	0-1000	8	32
HCH-630-OO	600	117	152	0-135	240	72.00	45	16	0-1000	30	34
HCH-408-AO	440	100	104	0-100	180	61.50	37	16	0-1200	8	18
HCH-430-AO	510	100	104	0-100	180	61.50	37	16	0-1200	30	20
HNCH-408-AO	482	104	104	0-125	180	59.80	44	16	0-1400	8	20
HNCH-430-AO	552	104	104	0-125	180	59.80	44	16	0-1400	30	22
HCH-608-AO	530	117	152	0-135	240	72.00	45	16	0-1800	8	32
HCH-630-AO	600	117	152	0-135	240	72.00	45	16	0-1800	30	34

*Above information are for reference only. The machine design, specifications and construction are subject to change without prior notice.



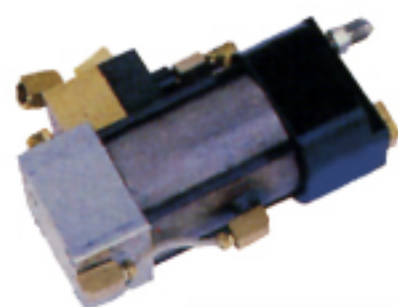
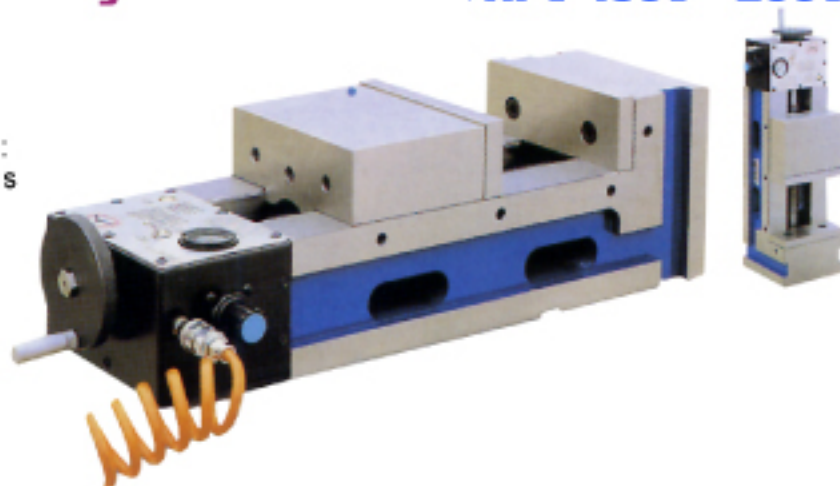
TAIWAN TOOL

Milling Machine Accessories / Vise

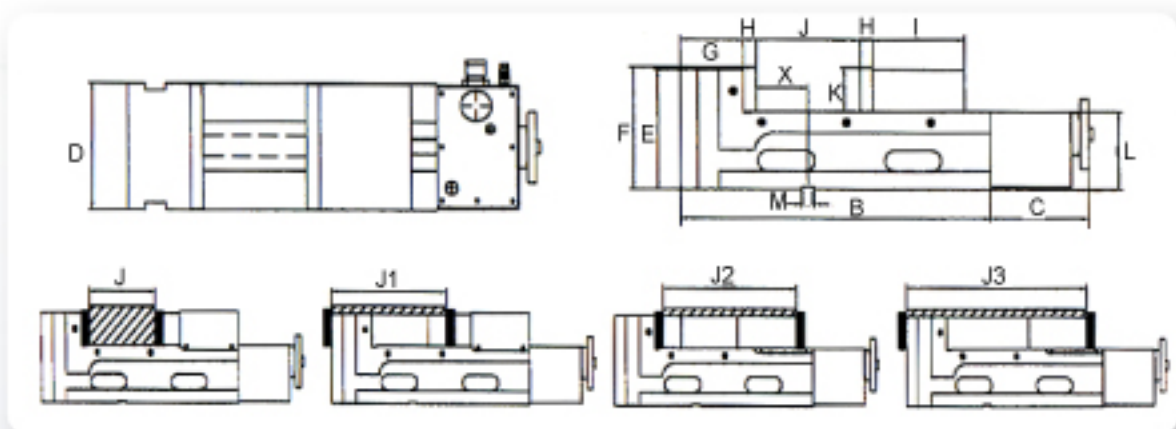
Pneumatic ang-fixed Vise ◀◀◀◀ APV-130V~200VS ▶▶▶▶

Features:

Three properties for standing, sideling, and lying:
 Custom-built dimensions, the vise in itself is six-sided grinding and the holding down plate tank is reserved in advance. It can be manufactured in upright position without tooling plate



The principle of this vise is the reciprocating air pressure motor (Patent structure) R&D by ourselves. It achieves the property of automatically biting by means of continuously increasing the pressure to push the oil way.



Specifications:

Unit:mm

Model	A	B	C	D	E	F	G	H	I	J
APV-130V	520	380	140	130	157	160	86	15	110	0-150
APV-160V	540	400	140	160	160	163	86	15	120	0-160
APV-160VS	630	490	140	160	160	163	86	15	120	0-250
APV-180V	600	460	140	180	170	173	90	18	130	0-200
APV-200V	610	470	140	200	170	173	90	18	140	0-200
APV-200VS	710	570	140	200	170	173	90	18	140	0-300

Model	J1	J2	J3	K	L	M	X	Grupping	N.W.(kg)	G.W.(kg)
APV-130V	95-250	110-275	200-380	55	105	18	45	6000	45	50
APV-160V	95-250	120-295	210-400	55	105	18	45	6000	47	56
APV-160VS	95-350	120-395	210-490	55	105	18	45	6000	53	62
APV-180V	100-300	130-350	220-460	63	110	18	72	9000	65	72
APV-200V	100-310	140-360	230-470	63	110	18	72	9000	70	80
APV-200VS	100-410	140-460	230-570	63	100	18	72	9000	79	90

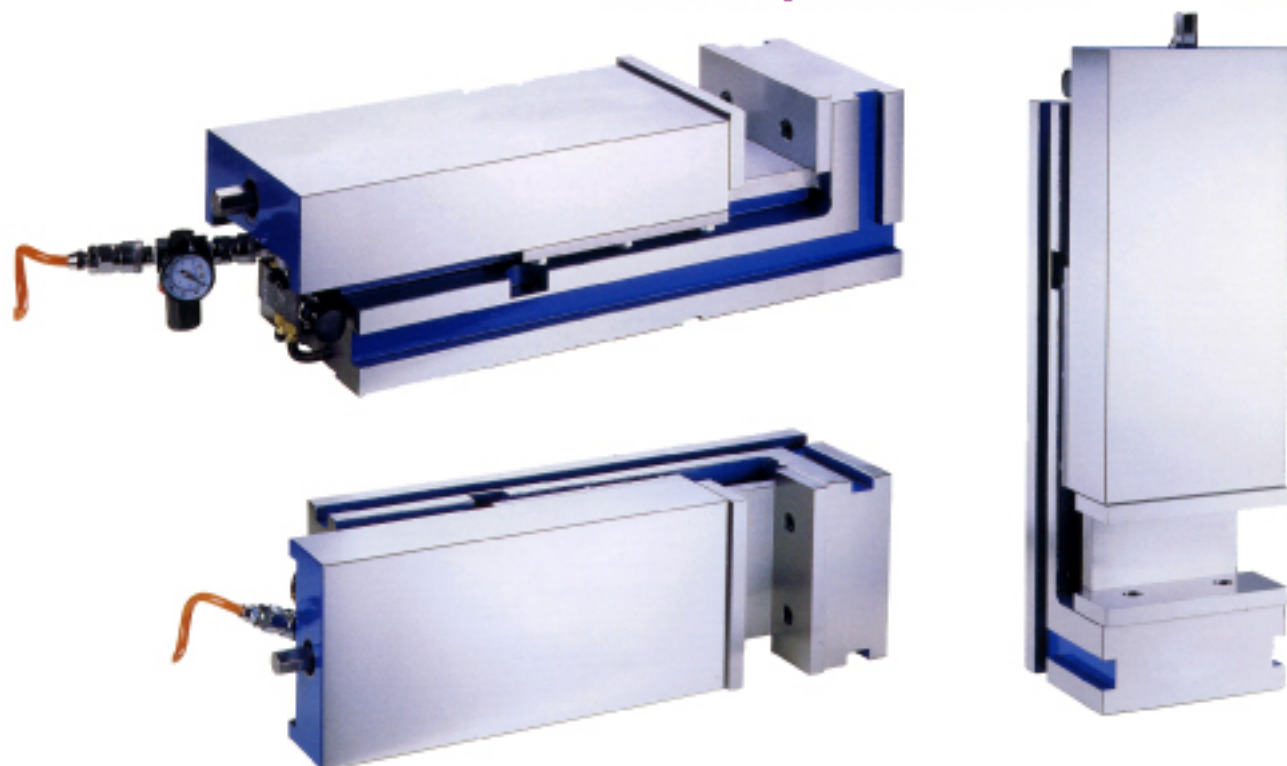
*Above information are for reference only. The machine design, specifications and construction are subject to change without prior notice.



TAIWAN TOOL

Milling Machine Accessories / Vise

ACV-260 pneumatic Vise <<<< ACV-260 >>>>

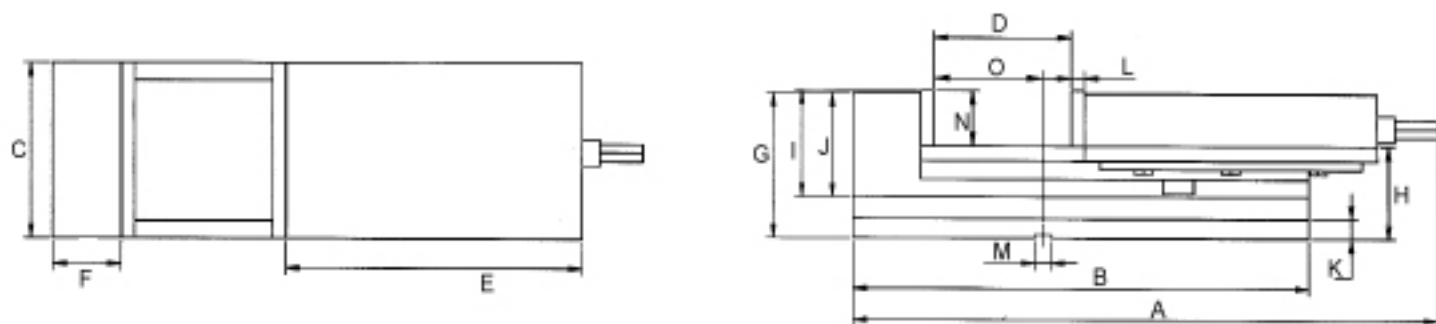


Features:

- 1-The vise can be used vertically, horizontally or stand on one side. Several parallel type vises in series or parallel can be used together.
- 2-New type pneumatic boost vise has a clamping force between 0~5000kgf. When the pneumatic pressure loses suddenly, the clamping force remains unchanged. The safety degree is high.
- 3-Airtight design makes cleaning easy. Vise oversize opening between 0~260mm meets the working needs most.
- 4-Depending on the size of the workpiece, the travel of the pneumatic switch is preset between 0~4mm. The operation is simple and easy.
- 5-FCD-60 spherical graphitized casting iron (60kgs/m³) is designed with a super strong structure, and very resistant to pressure and tension.
- 6-The slide is heat treated to over HRC-45° so as to keep precision and long-wearing. Parallelism is 0.01/100mm, and verticality is 0.01/100mm.
- 7-The vise jaws are heat treated to over HRC-55°. Parallelism is 0.01/100mm, and verticality is 0.01/100mm.

Note:

Before using this vise, please install the air control unit (F.R.L combination) by yourselves so as to avoid damage.



Specifications:

Unit: mm

Model	A	B	C	D	E	F	G	H	I	J	K	L	M	N	O	Clamping Force (kgf)	N.W. (kg)
ACV-260	545-805	520	180	0-260	390	77	165	105	122	117	22	15	18	65	124	5000	75

*Above information are for reference only. The machine design, specifications and construction are subject to change without prior notice.